

Table of Contents

1 General	1
1.1.Calculation of Rated Loads	1
1.3.Operating Radius	4
2 Operating Condition Codes	5
3 Operating Range Diagram	6
3.1 Main boom operating condition (H)	6
3.2 Main Boom + Fixed Jib Operating Condition (FJ)	7
4 Load Charts	8
4.1 Load Charts of Boom Hook for H Operating Condition	9
4.2 Load Charts of Jib Hook for FJ Operating Condition	10
4.3 Load Charts of Boom Hook for FJ Operating Condition	11
4.4 Load Charts of Extension Jib for HC Operating Condition	12
4.5 Load Charts of Boom Hook for HC Operating Condition	13

Table of Contents

SCC800C Crawler Crane — Operation Manual



1 General

1.1. Calculation of Rated Loads

Rated loads in the load charts are determined either by strength or by stability.

Rated loads determined by stability are calculated according to ISO 4305:1991 Mobile Cranes——
Determination of Stability and these rated loads are always within the 75% of tipping load.

1.2. Use the Load Charts Properly

- 1) Ground conditions: rated loads in the load charts are calculated in the condition that the crane is on hard, horizontal and evenly-supported ground with gradient smaller than 1%. If these condition requirements are not fulfilled, the value of rated loads must be decreased for calculation.
- 2) Actual Lifting Capacity: the weight of hook blocks, lifting devices, and wire ropes ree ving between the hooks and boom/jib heads must be deducted from the rate load to obtain a net lifting value, i.e. the actual lifting capacity.
- 3) When the crane is equipped with jib or extension jib, the weight of main hook, auxiliary hook and weight to deduct listed in the Table 3.1 are also included in the value of rated load. Therefore, these weights and values, as well as the equivalent weights of wire ropes and lifting devices onto boom head must be deducted from the rated load stipulated in the load charts to obtain the actual lifting capacity; and the crane is not allowed to operate when the value of actual lifting capacity obtained by the prescribed calculation is less than 0.8t (1760lb).

Table 3-1

Jib length (m)(ft in)	9 (29'6")	13.5 (44'3")	18 (59'1")	Extension jib
Weight to deduct (t) (lb)	1.0 (2,210)	1.3 (2,870)	1.65 (3,640)	0.2 (441)

Table 3-2 Hook Parameters

Model (t) (Ust)	80 (88)	50 (55)	25 (28)	9 (10)
Deadweight (kg) (lb)	1250 (2,760)	750 (1,650)	550 (1,210)	250 (551)

Notice:Weight of wire ropes reeving between hooks (main hook, auxiliary hook) and boom/jib heads is calculated by 2.8kg/m(1.88lb/ft).

Section 4-Load Charts

4) Wind Speed: Calculating rated loads also takes allowable wind speed of each operating condition into consideration. The SCC800C crawler crane is allowed to operate when the speed of stable wind or gust is not exceeding 16m/s (35.8mph). Hence the maximum allowable wind speed for SCC800C crawler crane is 9.8m/s (21.9mph)~16.0m/s (35.8mph) (equivalent to 60~160 N/m² (0.009 ~0.023psi) dynamic pressure); when the wind speed is higher than 16m/s and lower than 22m/s (49.2mph), the crane is not allowed to operate but allowed to have the boom system upstanding when only boom is attached; when wind speed is higher than 22m/s (49.2mph), the boom system must be lowered down to the ground.

Table 3-3 Allowable Wind Speed in H Operating Condition

Boom length (m)(ft in)	Allowable wind speed (m/s) (mph)	Corresponding allowable dynamic pressure (N/m ²)(psi)
<13~19 (42'8"~62'4")	16 (35.8)	160 (0.023)
22~34 (72'2"~111'7")	15 (33.6)	140 (0.02)
37~52 (121'5"~170'7")	11.3 (26.40)	80 (0.012)
>52 (170'7")	9.8 (21.9)	60 (0.009)

Table 3-4 Allowable Wind Speed in FJ (LJ) Operating Condition

Length of boom + jib (m)(ft in)	Allowable wind speed (m/s)(mph)	Corresponding allowable dynamic pressure (N/m ²)/ (psi)
37+(9~18) 121'5"+(29'6"~59'1")	11.3 (26.40)	80 (0.012)
(40 ~52)+(9~18) (131'3"~170'7")+(29'6"~59'1")	9.8 (21.9)	60 (0.009)

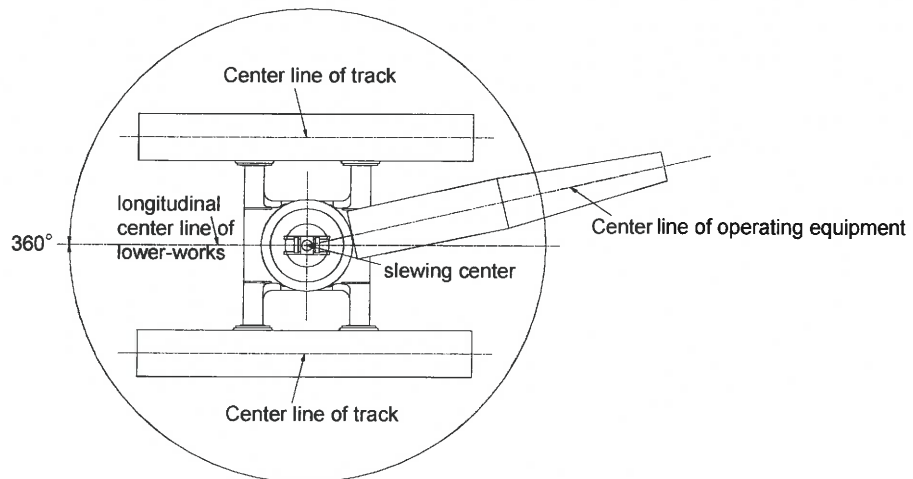
If the wind speed at operating site cannot fulfill the requirements listed above, the crane is not allowed to operate until the load is reduced accordingly based on the actual situation.

Table 3-5 Reduction of Rated Load Corresponding to Wind Speed

Boom length (m) (ft in)	Wind speed (m/s) (mph)	Corresponding reduction of rated load in percentage (%)
52~58 (170.6'~190'3")	11.3 (26.40)	20
52~58 170.6'~190'3")	13.8 (30.87)	50
40~52+9~(18) (131'3"~170.6') + (29'6"~(59'1")	11.3 (26.40)	50
52~58, 40~52+9~(18) (131'3"~170.6') + (29'6"~(59'1")	16 (35.8)	Not allowed to operate

For further information on influences of wind speed, please refer to "Influence of Wind Speed" in "Operation Manual-Section 1 Operating Instructions".

5) Scope of Application: values or rated loads listed in the load charts are all applicable for the whole 360°slewing range.



Section 4-Load Charts

6)Rated Load for Traveling Crane: values of rated loads listed in the load charts are calculated in condition that the crane is not traveling, and these values should be decreased accordingly when the crane is traveling. For traveling steadily at low speed, 90% of the rated load is allowed to attach in H operating condition for straight-line traveling, or 70% of the rated load is allowed to attach in H operating condition for turning, or 50% of the rated load is allowed to attach in FJ operating condition and LJ operating condition for straight-line traveling.

Notices requiring special care for traveling with load:

a)It is suggested to move the load in an area as small as possible and make the load close to the ground enough (with maximum distance of 500mm (1'7.7")to the ground);

b)Only the low gear can be used if possible, and take proper measures to prevent the load swinging. For specifications on traveling, please refer to the "Traveling Operation" in Chapter □ of this manual.

7)Others:

a)The use temperature applicable to these load charts ranges from -20°C~40°C;

1.3.Operating Radius

Operating radius is the horizontal distance from slewing center to the center line along the wire rope which is suspending load or the center of the pulley set bearing load.

Operating angle is the angle from the center line of operating equipment to horizontal line.

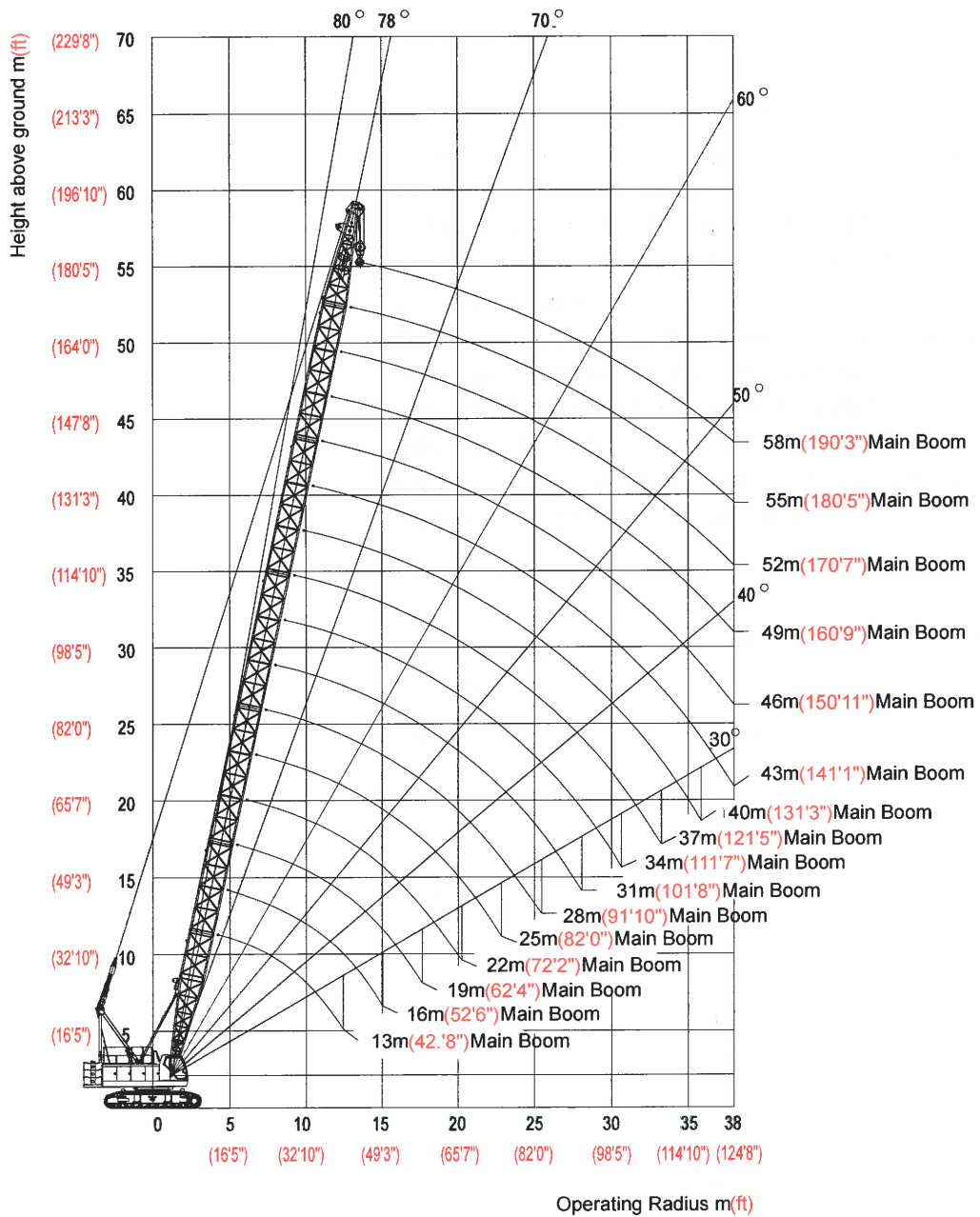
2 Operating Condition Codes

Operating Condition Codes

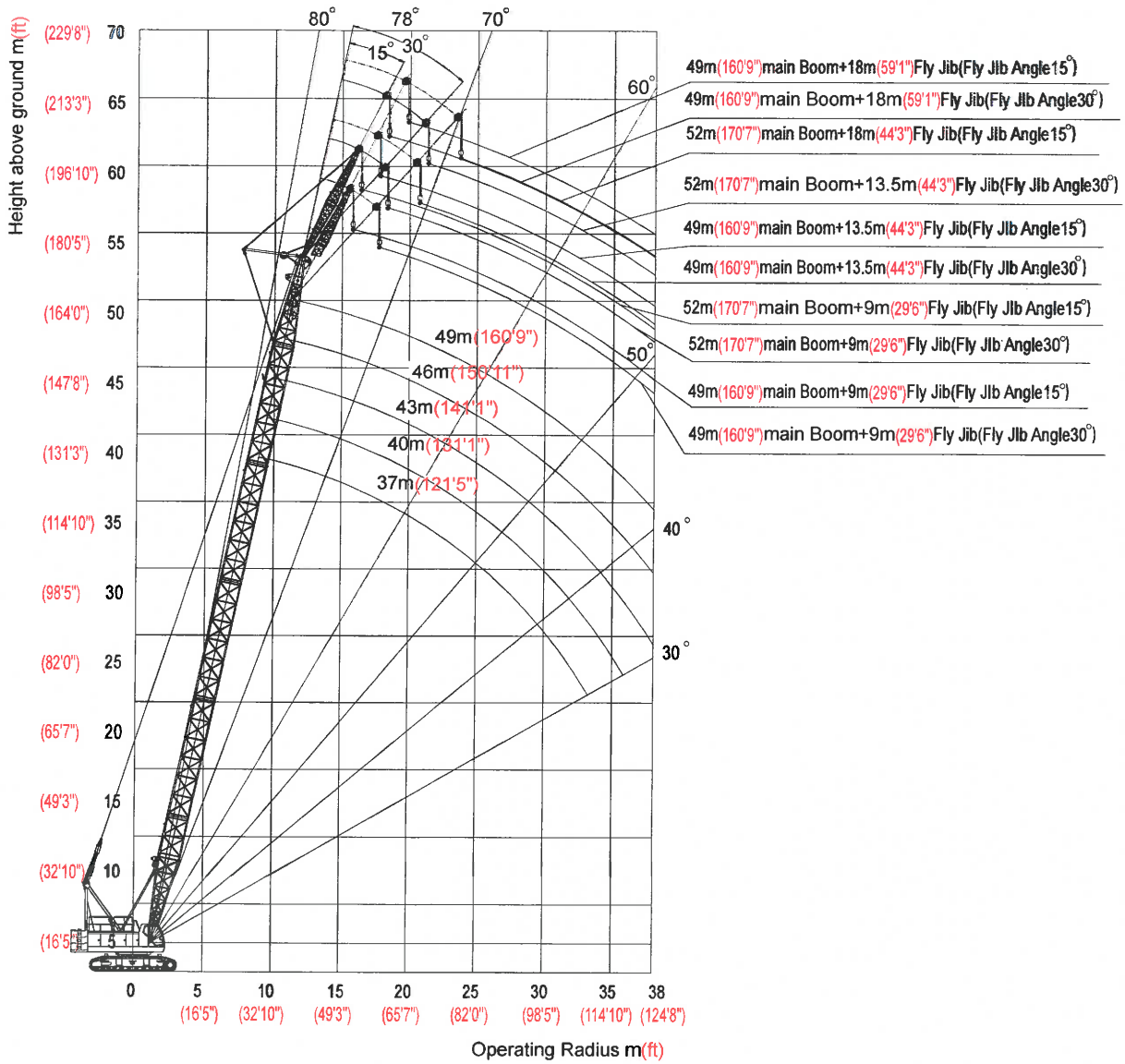
NO.	Operating Condition	Code
1	Main Boom	H
2	Main Boom + Fix Jib	FJ
3	Main Boom + Extension Jib	HC

3 Operating Range Diagram

3.1 Main boom operating condition (H)



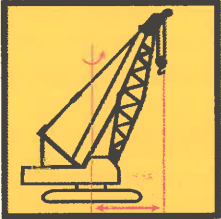
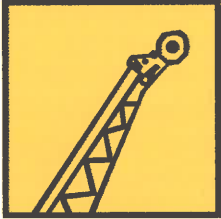
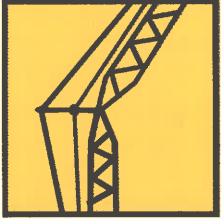

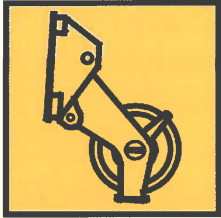

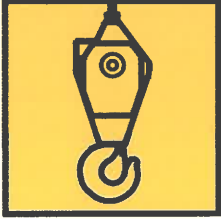
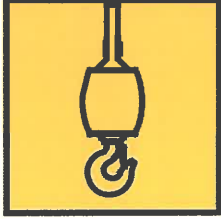
3.2 Main Boom + Fixed Jib Operating Condition (FJ)



3.3 Main Boom + Extension Jib Operating Condition (HC)

Section 4-Load Charts

4 Load Charts

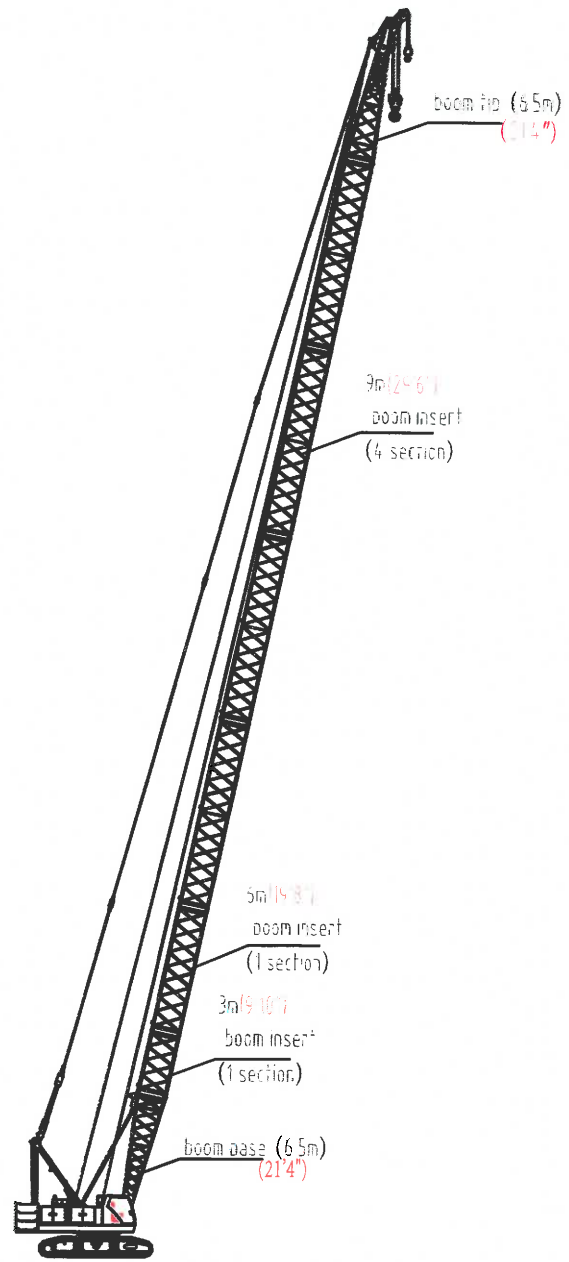
Meaning of Signs		
		
Operating Radius (R)	Main Boom (H)	Fixed Jib (FJ)
		
Counterweight, Additional Counterweight, Counterweight +Additional counterweight	Extension Jib	Boom Hook
		
Jib Hook	Extension Jib Hook	

Please refer to the annex to "Operation Manual-Section 4 Load Charts" for detailed load charts.

4.1 Load Charts of Boom Hook for H Operating Condition

Boom Combination of HC Operating Condition

Boom length (m) / (ft)	Boom insert		
	3 m (9'10")	6 m (19'8")	9m (29'6")
13 (42'8")	-	-	-
16 (52'6")	1	-	-
19 (62'4")	-	1	-
22 (72'2")	-	-	1
25 (82'0")	1	-	1
28 (91'10")	-	1	1
31 (108'8")	1	1	1
34 (111'7")	1	-	2
37 (121'5")	-	1	2
40 (131'3")	1	1	2
43 (141'1")	1	-	3
46 (150'11")	-	1	3
49 (160'9")	1	1	3
52 (170'7")	1	-	4
55 (180'5")	-	1	4
58 (190'3")	1	1	4



H Operating condition

Load Charts of Boom Hook For SCC800C H Operating Condition										kg (lb)×1000
Boom m (ft) Radius m (ft)	13 (42'8")	16 (52'6")	19 (62'4")	22 (72'2")	25 (82')	28 (91'10")	31 (101'8")		34 (111'7")	
4.3 (14'1")	80.00 (176.37)									
4.5 (14'9")	76.50 (168.65)									
5 (16'5")	68.07 (150.07)	66.80 (147.27)								
5.5 (18'1")	59.18 (130.47)	58.90 (129.85)	58.72 (129.45)							
6 (19'8")	52.30 (115.3)	52.02 (114.68)	51.84 (114.29)	51.66 (113.89)						
6.5 (21'4")	46.82 (103.22)	46.54 (102.6)	46.35 (102.18)	46.18 (101.81)	45.90 (101.19)					
7 (22'12")	42.34 (93.34)	42.06 (92.72)	41.88 (92.33)	41.70 (91.93)	41.42 (91.31)	40.72 (89.77)				
7.5 (24'7")	38.60 (85.16)	38.30 (84.52)	38.20 (84.13)	38.00 (83.73)	37.70 (83.11)	37.10 (81.7)	36.90 (81.33)	38.50 (84.88)		
8 (26'3")	35.50 (78.24)	35.20 (77.6)	35.00 (77.2)	34.80 (76.81)	34.60 (76.19)	34.00 (74.89)	33.80 (74.49)	35.30 (77.8)	33.51 (73.88)	35.01 (77.18)
8.5 (27'11")	32.80 (72.31)	32.50 (71.67)	32.30 (71.27)	32.20 (70.9)	31.90 (70.26)	31.30 (69.05)	31.10 (68.65)	32.60 (71.76)	30.86 (68.03)	32.26 (71.12)
9 (29'6")	30.47 (67.17)	30.20 (66.56)	30.00 (66.16)	29.80 (65.76)	29.60 (65.15)	29.00 (63.98)	28.90 (63.6)	30.20 (66.51)	28.56 (62.96)	29.88 (65.87)
10 (32'10")	26.65 (58.75)	26.37 (58.13)	26.20 (57.72)	26.00 (57.34)	25.70 (56.7)	25.30 (55.67)	25.10 (55.27)	26.30 (57.89)	24.79 (54.65)	25.97 (57.25)
11 (36'1")	23.64 (52.12)	23.35 (51.48)	23.17 (51.08)	22.99 (50.68)	22.71 (50.07)	22.28 (49.12)	22.10 (48.72)	23.17 (51.08)	21.81 (48.08)	22.88 (50.44)
12 (39'4")	21.21 (46.76)	20.92 (46.12)	20.74 (45.72)	20.56 (45.33)	20.27 (44.69)	19.87 (43.81)	19.69 (43.41)	20.67 (45.57)	19.41 (42.79)	20.38 (44.93)
13 (42'8")		18.91 (41.69)	18.73 (41.29)	18.55 (40.9)	18.27 (40.28)	17.88 (39.42)	17.71 (39.04)	18.60 (41.01)	17.42 (38.4)	18.32 (40.39)
14 (45'11")		17.23 (37.99)	17.04 (37.57)	16.87 (37.19)	16.58 (36.55)	16.22 (35.76)	16.04 (35.36)	16.87 (37.19)	15.80 (34.74)	16.60 (36.55)
15 (49'3")			15.61 (34.41)	15.43 (34.02)	15.15 (33.4)	14.80 (32.63)	14.62 (32.23)	15.39 (33.93)	14.30 (31.61)	15.10 (33.31)
16 (52'6")			14.37 (31.68)	14.20 (31.31)	13.91 (30.67)	13.58 (29.94)	13.40 (29.54)	14.12 (31.13)	13.11 (28.9)	13.80 (30.49)
18 (59'1")				12.18 (26.85)	11.89 (26.21)	11.58 (25.53)	11.40 (25.13)	12.04 (26.54)	11.12 (24.51)	11.80 (25.9)
20 (65'7")					10.31 (22.73)	10.01 (22.07)	9.84 (21.69)	10.41 (22.95)	9.55 (21.05)	10.12 (22.31)
22 (72'2")					9.03 (19.91)	8.75 (19.29)	8.58 (18.92)	9.09 (20.04)	8.29 (18.28)	8.81 (19.42)
24 (78'9")						7.72 (17.02)	7.54 (16.62)	8.01 (17.66)	7.25 (15.98)	7.73 (17.04)
26 (85'4")							6.67 (14.7)	7.11 (15.67)	6.36 (14.02)	6.82 (15.04)
28 (91'10")									5.60 (12.35)	6.06 (13.36)
30 (98'5")									4.94 (10.89)	5.39 (11.88)
Counterweight kg(lb)×1000	27 (59.5)	27 (59.5)	27 (59.5)	27 (59.5)	27 (59.5)	27 (59.5)	27 (59.5)	27+2.5 (59.5+5.5)	27 (59.5)	27+2.5 (59.5+5.5)

Note: italic figures in 40% greyed cells indicate rated load when the crane is equipped with additional counterweight; and figures in framed and 25% greyed cells depends on the strength of the boom.

Load Charts of Boom Hook For SCC800C H Operating Condition

kg(lb)×1000

Boom m (ft) Radius m (ft)	37 (121'5")		40 (131'3")		43 (141'1")		46 (150'11")		49 (160'9")	
8.5 (27'11")										
9 (29'6")	28.38 (62.57)	29.70 (65.48)								
10 (32'10")	24.60 (54.23)	25.78 (56.83)	24.43 (53.86)	25.61 (56.46)	24.14 (53.22)	25.32 (55.82)				
11 (36'1")	21.63 (47.69)	22.70 (50.04)	21.45 (47.29)	22.52 (49.65)	21.17 (46.67)	22.23 (49.01)	20.98 (46.25)	22.05 (48.61)		
12 (39'4")	19.22 (42.37)	20.20 (44.53)	19.05 (42)	20.02 (44.14)	18.76 (41.36)	19.73 (43.5)	18.58 (40.96)	19.55 (43.1)	18.40 (40.56)	19.37 (42.7)
13 (42'8")	17.24 (38.01)	18.13 (39.97)	17.06 (37.61)	17.95 (39.57)	16.77 (36.97)	17.67 (38.96)	16.59 (36.57)	17.48 (38.54)	16.41 (36.18)	17.30 (38.14)
14 (45'11")	15.60 (34.33)	16.40 (36.16)	15.40 (33.93)	16.20 (35.76)	15.10 (33.31)	15.90 (35.12)	14.92 (32.89)	15.75 (34.72)	14.75 (32.52)	15.57 (34.33)
15 (49'3")	14.20 (31.19)	14.90 (32.89)	14.00 (30.82)	14.70 (32.5)	13.70 (30.18)	14.50 (31.88)	13.50 (29.76)	14.27 (31.46)	13.33 (29.39)	14.09 (31.06)
16 (52'6")	12.90 (28.51)	13.70 (30.09)	12.80 (28.11)	13.50 (29.7)	12.50 (27.49)	13.20 (29.06)	12.28 (27.07)	13.00 (28.66)	12.11 (26.7)	12.82 (28.26)
18 (59'1")	10.90 (24.1)	11.60 (25.51)	10.80 (23.7)	11.40 (25.11)	10.50 (23.08)	11.10 (24.47)	10.28 (22.66)	10.92 (24.07)	10.11 (22.29)	10.74 (23.68)
20 (65'7")	9.40 (20.66)	9.90 (21.89)	9.20 (20.26)	9.80 (21.52)	8.90 (19.62)	9.50 (20.88)	8.70 (19.22)	9.30 (20.48)	8.50 (18.78)	9.10 (20.08)
22 (72'2")	8.11 (17.88)	8.62 (19)	7.93 (17.48)	8.44 (18.61)	7.61 (16.78)	8.16 (17.93)	7.40 (16.34)	8.00 (17.57)	7.20 (15.92)	7.80 (17.17)
24 (78'9")	7.05 (15.54)	7.54 (16.62)	6.86 (15.12)	7.37 (16.25)	6.54 (14.42)	7.08 (15.61)	6.34 (13.98)	6.90 (15.19)	6.10 (13.54)	6.70 (14.79)
26 (85'4")	6.15 (13.56)	6.64 (14.64)	5.96 (13.14)	6.46 (14.24)	5.64 (12.43)	6.17 (13.6)	5.44 (11.99)	6.00 (13.14)	5.30 (11.57)	5.80 (12.72)
28 (91'10")	5.39 (11.88)	5.87 (12.94)	5.20 (11.46)	5.68 (12.52)	4.88 (10.76)	5.37 (11.84)	4.68 (10.32)	5.16 (11.38)	4.50 (9.9)	5.00 (10.96)
30 (98'5")	4.74 (10.45)	5.19 (11.44)	4.55 (10.03)	5.00 (11.02)	4.23 (9.33)	4.68 (10.32)	4.03 (8.88)	4.48 (9.88)	3.83 (8.44)	4.28 (9.44)
32 (104'12")	4.17 (9.19)	4.59 (10.12)	3.98 (8.77)	4.40 (9.7)	3.66 (8.07)	4.08 (8.99)	3.46 (7.63)	3.88 (8.55)	3.27 (7.21)	3.69 (8.13)
34 (111'7")			3.48 (7.67)	3.88 (8.55)	3.17 (6.99)	3.56 (7.85)	2.97 (6.55)	3.36 (7.41)	2.77 (6.11)	3.16 (6.97)
36 (118'1")					2.73 (6.02)	3.10 (6.83)	2.53 (5.58)	2.90 (6.39)	2.33 (5.14)	2.70 (5.95)
38 (124'8")					2.34 (5.16)	2.69 (5.93)	2.14 (4.72)	2.49 (5.49)	1.94 (4.28)	2.29 (5.05)
Counterweight kg(lb)×1000	27 (59.5)	27+2.5 (59.5+5.5)	27 (59.5)	27+2.5 (59.5+5.5)	27 (59.5)	27+2.5 (59.5+5.5)	27 (59.5)	27+2.5 (59.5+5.5)	27 (59.5)	27+2.5 (59.5+5.5)

Note: italic figures in 40% greyed cells indicate rated load when the crane is equipped with additional counterweight; and figures in framed and 25% greyed cells depends on the strength of the boom.

Load Charts of Boom Hook For SCC800C H Operating Condition

kg(lb)×1000

Boom m (ft) Radius m (ft)	52 (170'7")		55 (180'5")		58 (180'5")				
11 (36'1")									
12 (39'4")	18.11 (39.93)	19.08 (42.06)							
13 (42'8")	16.13 (35.56)	17.02 (37.52)	15.94 (35.14)	16.83 (37.1)	15.66 (34.52)	16.55 (36.49)			
14 (45'11")	14.46 (31.88)	15.28 (33.69)	14.28 (31.48)	15.10 (33.29)	13.99 (30.84)	14.81 (32.65)			
15 (49'3")	13.04 (28.75)	13.81 (30.45)	12.86 (28.35)	13.62 (30.03)	12.57 (27.71)	13.34 (29.41)			
16 (52'6")	11.82 (26.06)	12.53 (27.62)	11.63 (25.64)	12.35 (27.23)	11.35 (25.02)	12.06 (26.59)			
18 (59'1")	9.82 (21.65)	10.45 (23.04)	9.63 (21.23)	10.27 (22.64)	9.32 (20.55)	9.98 (22)			
20 (65'7")	8.20 (18.1)	8.80 (19.44)	8.00 (17.66)	8.60 (19.05)	7.70 (16.95)	8.40 (18.41)			
22 (72'2")	6.90 (15.21)	7.50 (16.56)	6.70 (14.77)	7.30 (16.14)	6.40 (14.09)	7.00 (15.45)			
24 (78'9")	5.80 (12.85)	6.40 (14.18)	5.60 (12.41)	6.20 (13.65)	5.30 (11.71)	5.90 (12.96)			
26 (85'4")	4.90 (10.87)	5.50 (12.13)	4.70 (10.43)	5.30 (11.57)	4.40 (9.74)	4.90 (10.89)			
28 (91'10")	4.20 (9.19)	4.70 (10.36)	4.00 (8.75)	4.50 (9.81)	3.70 (8.07)	4.10 (9.13)			
30 (98'5")	3.52 (7.76)	4.01 (8.84)	3.32 (7.32)	3.77 (8.31)	3.00 (6.61)	3.45 (7.61)			
32 (104'12")	2.95 (6.5)	3.41 (7.52)	2.75 (6.06)	3.17 (6.99)	2.44 (5.38)	2.85 (6.28)			
34 (111'7")	2.46 (5.42)	2.88 (6.35)	2.25 (4.96)	2.65 (5.84)	1.94 (4.28)	2.33 (5.14)			
36 (118'1")	2.02 (4.45)	2.42 (5.34)	1.81 (3.99)	2.18 (4.81)	1.50 (3.31)	1.87 (4.12)			
38 (124'8")	1.63 (3.59)	2.01 (4.43)	1.42 (3.13)	1.77 (3.9)	1.11 (2.45)	1.46 (3.22)			
Counterweight kg(lb)×1000	27 (59.5)	27+2.5 (59.5+5.5)	27 (59.5)	27+2.5 (59.5+5.5)	27 (59.5)	27+2.5 (59.5+5.5)			

Note: italic figures in 40% greyed cells indicate rated load when the crane is equipped with additional counterweight; and figures in framed and 25% greyed cells depends on the strength of the boom.

Section 4-Load Charts

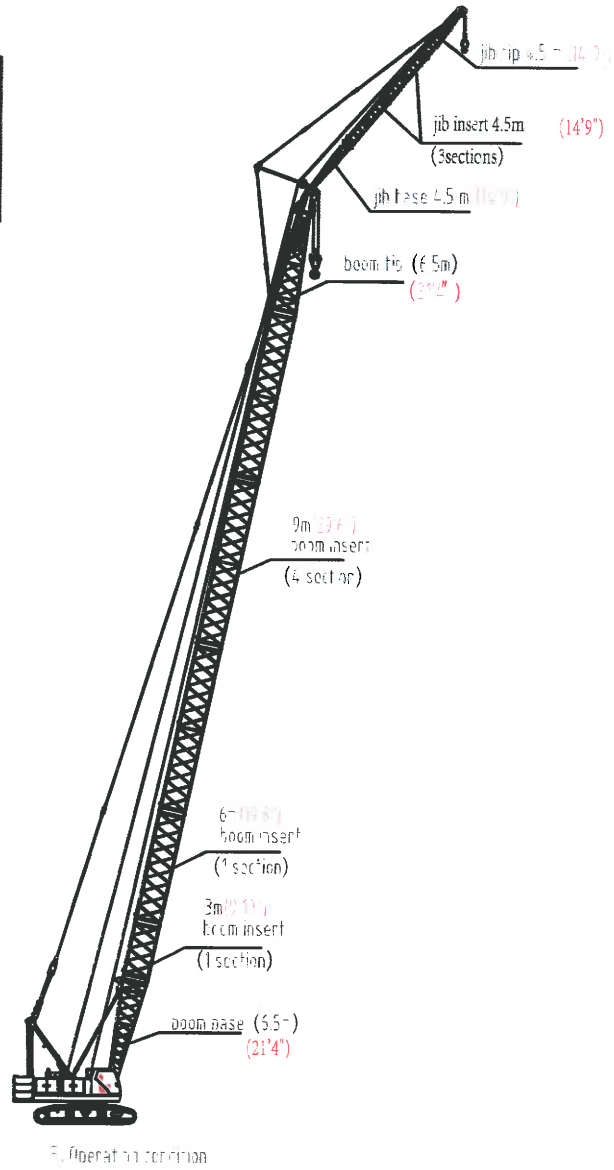
SCC8000 Crawler Crane — Operation Manual



4.2 Load Charts of Jib Hook for FJ Operating Condition

Combination of Fixed Jib

Jib Length (m)/(ft)	Boom insert 4.5m(14'9")
9(29'6")	-
13.5(44'3")	1
18(59'1")	2



Load Charts Of Jib Hook For SCC800C FJ Operating Condition												kg(lb)× 1000	
Boom length m (ft)	37m (121'5")												
Jib length m (ft)	9m (29'6")				13.5m (44'3")				18m (59'1")				
Jib angle Boom angle	15°		30°		15°		30°		15°		30°		
58°	4.78 (10.54)	5.16 (11.38)	4.51 (9.94)	4.87 (10.74)	4.06 (8.95)	4.40 (9.7)	3.60 (7.94)	3.60 (7.94)	3.48 (7.67)	3.50 (7.72)	2.40 (5.29)	2.40 (5.29)	
59°	5.00 (11.02)	5.39 (11.88)	4.71 (10.38)	5.00 (11.02)	4.25 (9.37)	4.60 (10.14)	3.60 (7.94)	3.60 (7.94)	3.50 (7.72)	3.50 (7.72)	2.40 (5.29)	2.40 (5.29)	
60°	5.24 (11.55)	5.64 (12.43)	4.91 (10.82)	5.00 (11.02)	4.46 (9.83)	4.82 (10.63)	3.60 (7.94)	3.60 (7.94)	3.50 (7.72)	3.50 (7.72)	2.40 (5.29)	2.40 (5.29)	
61°	5.49 (12.1)	5.90 (13.01)	5.00 (11.02)	5.00 (11.02)	4.67 (10.3)	5.04 (11.11)	3.60 (7.94)	3.60 (7.94)	3.50 (7.72)	3.50 (7.72)	2.40 (5.29)	2.40 (5.29)	
62°	5.76 (12.7)	6.00 (13.23)	5.00 (11.02)	5.00 (11.02)	4.90 (10.8)	5.27 (11.62)	3.60 (7.94)	3.60 (7.94)	3.50 (7.72)	3.50 (7.72)	2.40 (5.29)	2.40 (5.29)	
63°	6.00 (13.23)	6.00 (13.23)	5.00 (11.02)	5.00 (11.02)	5.15 (11.35)	5.53 (12.19)	3.60 (7.94)	3.60 (7.94)	3.50 (7.72)	3.50 (7.72)	2.40 (5.29)	2.40 (5.29)	
64°	6.00 (13.23)	6.00 (13.23)	5.00 (11.02)	5.00 (11.02)	5.41 (11.93)	5.81 (12.81)	3.60 (7.94)	3.60 (7.94)	3.50 (7.72)	3.50 (7.72)	2.40 (5.29)	2.40 (5.29)	
65°	6.00 (13.23)	6.00 (13.23)	5.00 (11.02)	5.00 (11.02)	5.70 (12.57)	6.00 (13.23)	3.60 (7.94)	3.60 (7.94)	3.50 (7.72)	3.50 (7.72)	2.40 (5.29)	2.40 (5.29)	
66°	6.00 (13.23)	6.00 (13.23)	5.00 (11.02)	5.00 (11.02)	6.00 (13.23)	6.00 (13.23)	3.60 (7.94)	3.60 (7.94)	3.50 (7.72)	3.50 (7.72)	2.40 (5.29)	2.40 (5.29)	
67°	6.00 (13.23)	6.00 (13.23)	5.00 (11.02)	5.00 (11.02)	6.00 (13.23)	6.00 (13.23)	3.60 (7.94)	3.60 (7.94)	3.50 (7.72)	3.50 (7.72)	2.40 (5.29)	2.40 (5.29)	
68°	6.00 (13.23)	6.00 (13.23)	5.00 (11.02)	5.00 (11.02)	6.00 (13.23)	6.00 (13.23)	3.60 (7.94)	3.60 (7.94)	3.50 (7.72)	3.50 (7.72)	2.40 (5.29)	2.40 (5.29)	
69°	6.00 (13.23)	6.00 (13.23)	5.00 (11.02)	5.00 (11.02)	6.00 (13.23)	6.00 (13.23)	3.60 (7.94)	3.60 (7.94)	3.50 (7.72)	3.50 (7.72)	2.40 (5.29)	2.40 (5.29)	
70°	6.00 (13.23)	6.00 (13.23)	5.00 (11.02)	5.00 (11.02)	6.00 (13.23)	6.00 (13.23)	3.60 (7.94)	3.60 (7.94)	3.50 (7.72)	3.50 (7.72)	2.40 (5.29)	2.40 (5.29)	
71°	6.00 (13.23)	6.00 (13.23)	5.00 (11.02)	5.00 (11.02)	6.00 (13.23)	6.00 (13.23)	3.60 (7.94)	3.60 (7.94)	3.50 (7.72)	3.50 (7.72)	2.40 (5.29)	2.40 (5.29)	
72°	6.00 (13.23)	6.00 (13.23)	5.00 (11.02)	5.00 (11.02)	6.00 (13.23)	6.00 (13.23)	3.60 (7.94)	3.60 (7.94)	3.50 (7.72)	3.50 (7.72)	2.40 (5.29)	2.40 (5.29)	
73°	6.00 (13.23)	6.00 (13.23)	5.00 (11.02)	5.00 (11.02)	6.00 (13.23)	6.00 (13.23)	3.60 (7.94)	3.60 (7.94)	3.50 (7.72)	3.50 (7.72)	2.40 (5.29)	2.40 (5.29)	
74°	6.00 (13.23)	6.00 (13.23)	5.00 (11.02)	5.00 (11.02)	6.00 (13.23)	6.00 (13.23)	3.60 (7.94)	3.60 (7.94)	3.50 (7.72)	3.50 (7.72)	2.40 (5.29)	2.40 (5.29)	
75°	6.00 (13.23)	6.00 (13.23)	5.00 (11.02)	5.00 (11.02)	6.00 (13.23)	6.00 (13.23)	3.60 (7.94)	3.60 (7.94)	3.50 (7.72)	3.50 (7.72)	2.40 (5.29)	2.40 (5.29)	
76°	6.00 (13.23)	6.00 (13.23)	5.00 (11.02)	5.00 (11.02)	6.00 (13.23)	6.00 (13.23)	3.60 (7.94)	3.60 (7.94)	3.50 (7.72)	3.50 (7.72)	2.40 (5.29)	2.40 (5.29)	
77°	6.00 (13.23)	6.00 (13.23)	5.00 (11.02)	5.00 (11.02)	6.00 (13.23)	6.00 (13.23)	3.60 (7.94)	3.60 (7.94)	3.50 (7.72)	3.50 (7.72)	2.40 (5.29)	2.40 (5.29)	
78°	6.00 (13.23)	6.00 (13.23)	5.00 (11.02)	5.00 (11.02)	6.00 (13.23)	6.00 (13.23)	3.60 (7.94)	3.60 (7.94)	3.50 (7.72)	3.50 (7.72)	2.40 (5.29)	2.40 (5.29)	
Counterweight kg(lb)×1000	27 (59.5)	27+2.5 (59.5+5.5)	27 (59.5)	27+2.5 (59.5+5.5)	27 (59.5)	27+2.5 (59.5+5.5)	27 (59.5)	27+2.5 (59.5+5.5)	27 (59.5)	27+2.5 (59.5+5.5)	27 (59.5)	27+2.5 (59.5+5.5)	

Note: italic figures in 40% greyed cells indicate rated load when the crane is equipped with additional counterweight; and figures in framed and 25% greyed cells depends on the strength of the boom.

Load Charts Of Jib Hook For SCC800C FJ Operating Condition

kg(lb)× 1000

Boom length m (ft)	40m (131'3")											
	9m (29'6")				13.5m (44'3")				18m (59'1")			
Jib length m (ft)	15°		30°		15°		30°		15°		30°	
Jib angle Boom angle	15°		30°		15°		30°		15°		30°	
58°	4.13 (9.1)	4.49 (9.9)	3.91 (8.62)	4.25 (9.37)	3.52 (7.76)	3.84 (8.47)	3.26 (7.19)	3.56 (7.85)	3.01 (6.64)	3.30 (7.28)	2.40 (5.29)	2.40 (5.29)
59°	4.34 (9.57)	4.71 (10.38)	4.10 (9.04)	4.45 (9.81)	3.70 (8.16)	4.03 (8.88)	3.41 (7.52)	3.60 (7.94)	3.17 (6.99)	3.47 (7.65)	2.40 (5.29)	2.40 (5.29)
60°	4.57 (10.07)	4.95 (10.91)	4.30 (9.48)	4.66 (10.27)	3.89 (8.58)	4.23 (9.33)	3.50 (7.72)	3.60 (7.94)	3.34 (7.36)	3.50 (7.72)	2.40 (5.29)	2.40 (5.29)
61°	4.81 (10.6)	5.20 (11.46)	4.51 (9.94)	4.88 (10.76)	4.10 (9.04)	4.45 (9.81)	3.60 (7.94)	3.60 (7.94)	3.50 (7.72)	3.50 (7.72)	2.40 (5.29)	2.40 (5.29)
62°	5.06 (11.16)	5.46 (12.04)	4.74 (10.45)	5.00 (11.02)	4.32 (9.52)	4.68 (10.32)	3.60 (7.94)	3.60 (7.94)	3.50 (7.72)	3.50 (7.72)	2.40 (5.29)	2.40 (5.29)
63°	5.34 (11.77)	5.75 (12.68)	4.98 (10.98)	5.00 (11.02)	4.56 (10.05)	4.93 (10.87)	3.60 (7.94)	3.60 (7.94)	3.50 (7.72)	3.50 (7.72)	2.40 (5.29)	2.40 (5.29)
64°	5.63 (12.41)	6.00 (13.23)	5.00 (11.02)	5.00 (11.02)	4.71 (10.38)	5.09 (11.22)	3.60 (7.94)	3.60 (7.94)	3.50 (7.72)	3.50 (7.72)	2.40 (5.29)	2.40 (5.29)
65°	6.00 (13.12)	6.00 (13.23)	5.00 (11.02)	5.00 (11.02)	5.10 (11.22)	5.50 (12.08)	3.60 (7.94)	3.60 (7.94)	3.50 (7.72)	3.50 (7.72)	2.40 (5.29)	2.40 (5.29)
66°	6.00 (13.23)	6.00 (13.23)	5.00 (11.02)	5.00 (11.02)	5.40 (11.86)	5.80 (12.74)	3.60 (7.94)	3.60 (7.94)	3.50 (7.72)	3.50 (7.72)	2.40 (5.29)	2.40 (5.29)
67°	6.00 (13.23)	6.00 (13.23)	5.00 (11.02)	5.00 (11.02)	5.70 (12.57)	6.00 (13.23)	3.60 (7.94)	3.60 (7.94)	3.50 (7.72)	3.50 (7.72)	2.40 (5.29)	2.40 (5.29)
68°	6.00 (13.23)	6.00 (13.23)	5.00 (11.02)	5.00 (11.02)	6.00 (13.23)	6.00 (13.23)	3.60 (7.94)	3.60 (7.94)	3.50 (7.72)	3.50 (7.72)	2.40 (5.29)	2.40 (5.29)
69°	6.00 (13.23)	6.00 (13.23)	5.00 (11.02)	5.00 (11.02)	6.00 (13.23)	6.00 (13.23)	3.60 (7.94)	3.60 (7.94)	3.50 (7.72)	3.50 (7.72)	2.40 (5.29)	2.40 (5.29)
70°	6.00 (13.23)	6.00 (13.23)	5.00 (11.02)	5.00 (11.02)	6.00 (13.23)	6.00 (13.23)	3.60 (7.94)	3.60 (7.94)	3.50 (7.72)	3.50 (7.72)	2.40 (5.29)	2.40 (5.29)
71°	6.00 (13.23)	6.00 (13.23)	5.00 (11.02)	5.00 (11.02)	6.00 (13.23)	6.00 (13.23)	3.60 (7.94)	3.60 (7.94)	3.50 (7.72)	3.50 (7.72)	2.40 (5.29)	2.40 (5.29)
72°	6.00 (13.23)	6.00 (13.23)	5.00 (11.02)	5.00 (11.02)	6.00 (13.23)	6.00 (13.23)	3.60 (7.94)	3.60 (7.94)	3.50 (7.72)	3.50 (7.72)	2.40 (5.29)	2.40 (5.29)
73°	6.00 (13.23)	6.00 (13.23)	5.00 (11.02)	5.00 (11.02)	6.00 (13.23)	6.00 (13.23)	3.60 (7.94)	3.60 (7.94)	3.50 (7.72)	3.50 (7.72)	2.40 (5.29)	2.40 (5.29)
74°	6.00 (13.23)	6.00 (13.23)	5.00 (11.02)	5.00 (11.02)	6.00 (13.23)	6.00 (13.23)	3.60 (7.94)	3.60 (7.94)	3.50 (7.72)	3.50 (7.72)	2.40 (5.29)	2.40 (5.29)
75°	6.00 (13.23)	6.00 (13.23)	5.00 (11.02)	5.00 (11.02)	6.00 (13.23)	6.00 (13.23)	3.60 (7.94)	3.60 (7.94)	3.50 (7.72)	3.50 (7.72)	2.40 (5.29)	2.40 (5.29)
76°	6.00 (13.23)	6.00 (13.23)	5.00 (11.02)	5.00 (11.02)	6.00 (13.23)	6.00 (13.23)	3.60 (7.94)	3.60 (7.94)	3.50 (7.72)	3.50 (7.72)	2.40 (5.29)	2.40 (5.29)
77°	6.00 (13.23)	6.00 (13.23)	5.00 (11.02)	5.00 (11.02)	6.00 (13.23)	6.00 (13.23)	3.60 (7.94)	3.60 (7.94)	3.50 (7.72)	3.50 (7.72)	2.40 (5.29)	2.40 (5.29)
78°	6.00 (13.23)	6.00 (13.23)	5.00 (11.02)	5.00 (11.02)	6.00 (13.23)	6.00 (13.23)	3.60 (7.94)	3.60 (7.94)	3.50 (7.72)	3.50 (7.72)	2.40 (5.29)	2.40 (5.29)
Counterweight kg(lb)×1000	27 (59.5)	27+2.5 (59.5+5.5)	27 (59.5)	27+2.5 (59.5+5.5)	27 (59.5)	27+2.5 (59.5+5.5)	27 (59.5)	27+2.5 (59.5+5.5)	27 (59.5)	27+2.5 (59.5+5.5)	27 (59.5)	27+2.5 (59.5+5.5)

Note: italic figures in 40% greyed cells indicate rated load when the crane is equipped with additional counterweight; and figures in framed and 25% greyed cells depends on the strength of the boom.

Load Charts Of Jib Hook For SCC800C FJ Operating Condition

kg(lb)× 1000

Boom length m(ft)	43m (141'1")											
	9m (29'6")				13.5m (44'3")				18m (59'1")			
Jib length m(ft)	15°		30°		15°		30°		15°		30°	
Jib angle Boom angle	15°		30°		15°		30°		15°		30°	
58°	3.59 (7.91)	3.93 (8.66)	3.40 (7.5)	3.73 (8.22)	3.05 (6.72)	3.36 (7.41)	2.83 (6.24)	3.12 (6.88)	2.60 (5.73)	2.88 (6.35)	2.37 (5.22)	2.40 (5.29)
59°	3.78 (8.33)	4.13 (9.1)	3.58 (7.89)	3.91 (8.62)	3.22 (7.1)	3.54 (7.8)	2.98 (6.57)	3.28 (7.23)	2.76 (6.08)	3.05 (6.72)	2.40 (5.29)	2.40 (5.29)
60°	4.00 (8.82)	4.36 (9.61)	3.77 (8.31)	4.11 (9.06)	3.41 (7.52)	3.73 (8.22)	3.14 (6.92)	3.44 (7.58)	2.92 (6.44)	3.21 (7.08)	2.40 (5.29)	2.40 (5.29)
61°	4.22 (9.3)	4.59 (10.12)	3.97 (8.75)	4.32 (9.52)	3.61 (7.96)	3.94 (8.69)	3.32 (7.32)	3.60 (7.94)	3.18 (7.01)	3.48 (7.67)	2.40 (5.29)	2.40 (5.29)
62°	4.47 (9.85)	4.85 (10.69)	4.19 (9.24)	4.55 (10.03)	3.82 (8.42)	4.16 (9.17)	3.50 (7.72)	3.60 (7.94)	3.29 (7.25)	3.50 (7.72)	2.40 (5.29)	2.40 (5.29)
63°	4.73 (10.43)	5.12 (11.29)	4.42 (9.74)	4.79 (10.56)	4.05 (8.93)	4.40 (9.7)	3.60 (7.94)	3.60 (7.94)	3.49 (7.69)	3.50 (7.72)	2.40 (5.29)	2.40 (5.29)
64°	5.01 (11.04)	5.41 (11.93)	4.64 (10.23)	5.00 (11.02)	4.29 (9.46)	4.65 (10.25)	3.60 (7.94)	3.60 (7.94)	3.50 (7.72)	3.50 (7.72)	2.40 (5.29)	2.40 (5.29)
65°	5.30 (11.71)	5.70 (12.61)	4.90 (10.89)	5.00 (11.02)	4.60 (10.03)	4.90 (10.85)	3.60 (7.94)	3.60 (7.94)	3.50 (7.72)	3.50 (7.72)	2.40 (5.29)	2.40 (5.29)
66°	5.60 (12.43)	6.00 (13.23)	5.00 (11.02)	5.00 (11.02)	4.80 (10.67)	5.20 (11.51)	3.60 (7.94)	3.60 (7.94)	3.50 (7.72)	3.50 (7.72)	2.40 (5.29)	2.40 (5.29)
67°	6.00 (13.23)	6.00 (13.23)	5.00 (11.02)	5.00 (11.02)	5.10 (11.33)	5.50 (12.21)	3.60 (7.94)	3.60 (7.94)	3.50 (7.72)	3.50 (7.72)	2.40 (5.29)	2.40 (5.29)
68°	6.00 (13.23)	6.00 (13.23)	5.00 (11.02)	5.00 (11.02)	5.50 (12.06)	5.90 (12.96)	3.60 (7.94)	3.60 (7.94)	3.50 (7.72)	3.50 (7.72)	2.40 (5.29)	2.40 (5.29)
69°	6.00 (13.23)	6.00 (13.23)	5.00 (11.02)	5.00 (11.02)	5.80 (12.85)	6.00 (13.23)	3.60 (7.94)	3.60 (7.94)	3.50 (7.72)	3.50 (7.72)	2.40 (5.29)	2.40 (5.29)
70°	6.00 (13.23)	6.00 (13.23)	5.00 (11.02)	5.00 (11.02)	6.00 (13.23)	6.00 (13.23)	3.60 (7.94)	3.60 (7.94)	3.50 (7.72)	3.50 (7.72)	2.40 (5.29)	2.40 (5.29)
71°	6.00 (13.23)	6.00 (13.23)	5.00 (11.02)	5.00 (11.02)	6.00 (13.23)	6.00 (13.23)	3.60 (7.94)	3.60 (7.94)	3.50 (7.72)	3.50 (7.72)	2.40 (5.29)	2.40 (5.29)
72°	6.00 (13.23)	6.00 (13.23)	5.00 (11.02)	5.00 (11.02)	6.00 (13.23)	6.00 (13.23)	3.60 (7.94)	3.60 (7.94)	3.50 (7.72)	3.50 (7.72)	2.40 (5.29)	2.40 (5.29)
73°	6.00 (13.23)	6.00 (13.23)	5.00 (11.02)	5.00 (11.02)	6.00 (13.23)	6.00 (13.23)	3.60 (7.94)	3.60 (7.94)	3.50 (7.72)	3.50 (7.72)	2.40 (5.29)	2.40 (5.29)
74°	6.00 (13.23)	6.00 (13.23)	5.00 (11.02)	5.00 (11.02)	6.00 (13.23)	6.00 (13.23)	3.60 (7.94)	3.60 (7.94)	3.50 (7.72)	3.50 (7.72)	2.40 (5.29)	2.40 (5.29)
75°	6.00 (13.23)	6.00 (13.23)	5.00 (11.02)	5.00 (11.02)	6.00 (13.23)	6.00 (13.23)	3.60 (7.94)	3.60 (7.94)	3.50 (7.72)	3.50 (7.72)	2.40 (5.29)	2.40 (5.29)
76°	6.00 (13.23)	6.00 (13.23)	5.00 (11.02)	5.00 (11.02)	6.00 (13.23)	6.00 (13.23)	3.60 (7.94)	3.60 (7.94)	3.50 (7.72)	3.50 (7.72)	2.40 (5.29)	2.40 (5.29)
77°	6.00 (13.23)	6.00 (13.23)	5.00 (11.02)	5.00 (11.02)	6.00 (13.23)	6.00 (13.23)	3.60 (7.94)	3.60 (7.94)	3.50 (7.72)	3.50 (7.72)	2.40 (5.29)	2.40 (5.29)
78°	6.00 (13.23)	6.00 (13.23)	5.00 (11.02)	5.00 (11.02)	6.00 (13.23)	6.00 (13.23)	3.60 (7.94)	3.60 (7.94)	3.50 (7.72)	3.50 (7.72)	2.40 (5.29)	2.40 (5.29)
Counterweight kg(lb)×1000	27 (59.5)	27+2.5 (59.5+5.5)	27 (59.5)	27+2.5 (59.5+5.5)	27 (59.5)	27+2.5 (59.5+5.5)	27 (59.5)	27+2.5 (59.5+5.5)	27 (59.5)	27+2.5 (59.5+5.5)	27 (59.5)	27+2.5 (59.5+5.5)

Note: italic figures in 40% greyed cells indicate rated load when the crane is equipped with additional counterweight; and figures in framed and 25% greyed cells depends on the strength of the boom.

Load Charts Of Jib Hook For SCC800C FJ Operating Condition

kg(lb)× 1000

Boom length m (ft)	46m (150'11")											
	9m (29'6")				13.5m (44'3")				18m (59'1")			
Jib length m (ft)	15°		30°		15°		30°		15°		30°	
Jib angle Boom angle	15°	30°	15°	30°	15°	30°	15°	30°	15°	30°	15°	30°
58°	3.04 (6.7)	3.36 (7.41)	2.88 (6.35)	3.36 (7.41)	2.58 (5.69)	2.87 (6.33)	2.39 (5.27)	2.67 (5.89)	2.19 (4.83)	2.46 (5.42)	1.99 (4.39)	2.24 (4.94)
59°	3.23 (7.12)	3.56 (7.85)	3.06 (6.75)	3.56 (7.85)	2.74 (6.04)	3.04 (6.7)	2.54 (5.6)	2.82 (6.22)	2.34 (5.16)	2.62 (5.78)	2.12 (4.67)	2.38 (5.25)
60°	3.43 (7.56)	3.77 (8.31)	3.24 (7.14)	3.77 (8.31)	2.92 (6.44)	3.23 (7.12)	2.70 (5.95)	2.99 (6.59)	2.50 (5.51)	2.78 (6.13)	2.26 (4.98)	2.40 (5.29)
61°	3.65 (8.05)	4.00 (8.82)	3.44 (7.58)	4.00 (8.82)	3.11 (6.86)	3.43 (7.56)	2.87 (6.33)	3.17 (6.99)	2.67 (5.89)	2.96 (6.53)	2.38 (5.25)	2.40 (5.29)
62°	3.88 (8.55)	4.24 (9.35)	3.65 (8.05)	4.24 (9.35)	3.32 (7.32)	3.65 (8.05)	3.04 (6.7)	3.34 (7.36)	2.85 (6.28)	3.15 (6.94)	2.40 (5.29)	2.40 (5.29)
63°	4.13 (9.1)	4.50 (9.92)	3.87 (8.53)	4.50 (9.92)	3.53 (7.78)	3.86 (8.51)	3.23 (7.12)	3.54 (7.8)	3.04 (6.7)	3.35 (7.39)	2.40 (5.29)	2.40 (5.29)
64°	4.39 (9.68)	4.77 (10.52)	4.11 (9.06)	4.77 (10.52)	3.77 (8.31)	4.11 (9.06)	3.43 (7.56)	3.60 (7.94)	3.25 (7.16)	3.50 (7.72)	2.40 (5.29)	2.40 (5.29)
65°	4.70 (10.32)	5.10 (11.18)	4.40 (9.61)	5.10 (11.18)	4.00 (8.86)	4.40 (9.66)	3.60 (7.94)	3.60 (7.94)	3.50 (7.65)	3.50 (7.72)	2.40 (5.29)	2.40 (5.29)
66°	5.00 (11.02)	5.40 (11.93)	4.60 (10.23)	5.40 (11.93)	4.30 (9.46)	4.70 (10.27)	3.60 (7.94)	3.60 (7.94)	3.50 (7.72)	3.50 (7.72)	2.40 (5.29)	2.40 (5.29)
67°	5.34 (11.77)	5.80 (12.7)	4.90 (10.89)	5.80 (12.7)	4.60 (10.12)	5.00 (10.96)	3.60 (7.94)	3.60 (7.94)	3.50 (7.72)	3.50 (7.72)	2.40 (5.29)	2.40 (5.29)
68°	5.70 (12.57)	6.00 (13.23)	5.00 (11.02)	6.00 (13.23)	4.90 (10.82)	5.30 (11.68)	3.60 (7.94)	3.60 (7.94)	3.50 (7.72)	3.50 (7.72)	2.40 (5.29)	2.40 (5.29)
69°	6.00 (13.23)	6.00 (13.23)	5.00 (11.02)	6.00 (13.23)	5.30 (11.57)	5.70 (12.48)	3.60 (7.94)	3.60 (7.94)	3.50 (7.72)	3.50 (7.72)	2.40 (5.29)	2.40 (5.29)
70°	6.00 (13.23)	6.00 (13.23)	5.00 (11.02)	6.00 (13.23)	5.63 (12.41)	6.00 (13.23)	3.60 (7.94)	3.60 (7.94)	3.50 (7.72)	3.50 (7.72)	2.40 (5.29)	2.40 (5.29)
71°	6.00 (13.23)	6.00 (13.23)	5.00 (11.02)	6.00 (13.23)	6.00 (13.23)	6.00 (13.23)	3.60 (7.94)	3.60 (7.94)	3.50 (7.72)	3.50 (7.72)	2.40 (5.29)	2.40 (5.29)
72°	6.00 (13.23)	6.00 (13.23)	5.00 (11.02)	6.00 (13.23)	6.00 (13.23)	6.00 (13.23)	3.60 (7.94)	3.60 (7.94)	3.50 (7.72)	3.50 (7.72)	2.40 (5.29)	2.40 (5.29)
73°	6.00 (13.23)	6.00 (13.23)	5.00 (11.02)	6.00 (13.23)	6.00 (13.23)	6.00 (13.23)	3.60 (7.94)	3.60 (7.94)	3.50 (7.72)	3.50 (7.72)	2.40 (5.29)	2.40 (5.29)
74°	6.00 (13.23)	6.00 (13.23)	5.00 (11.02)	6.00 (13.23)	6.00 (13.23)	6.00 (13.23)	3.60 (7.94)	3.60 (7.94)	3.50 (7.72)	3.50 (7.72)	2.40 (5.29)	2.40 (5.29)
75°	6.00 (13.23)	6.00 (13.23)	5.00 (11.02)	6.00 (13.23)	6.00 (13.23)	6.00 (13.23)	3.60 (7.94)	3.60 (7.94)	3.50 (7.72)	3.50 (7.72)	2.40 (5.29)	2.40 (5.29)
76°	6.00 (13.23)	6.00 (13.23)	5.00 (11.02)	6.00 (13.23)	6.00 (13.23)	6.00 (13.23)	3.60 (7.94)	3.60 (7.94)	3.50 (7.72)	3.50 (7.72)	2.40 (5.29)	2.40 (5.29)
77°	6.00 (13.23)	6.00 (13.23)	5.00 (11.02)	6.00 (13.23)	6.00 (13.23)	6.00 (13.23)	3.60 (7.94)	3.60 (7.94)	3.50 (7.72)	3.50 (7.72)	2.40 (5.29)	2.40 (5.29)
78°	6.00 (13.23)	6.00 (13.23)	5.00 (11.02)	6.00 (13.23)	6.00 (13.23)	6.00 (13.23)	3.60 (7.94)	3.60 (7.94)	3.50 (7.72)	3.50 (7.72)	2.40 (5.29)	2.40 (5.29)
Counterweight kg(lb)×1000	27 (59.5)	27+2.5 (59.5+5.5)	27 (59.5)	27+2.5 (59.5+5.5)	27 (59.5)	27+2.5 (59.5+5.5)	27 (59.5)	27+2.5 (59.5+5.5)	27 (59.5)	27+2.5 (59.5+5.5)	27 (59.5)	27+2.5 (59.5+5.5)

Note: italic figures in 40% greyed cells indicate rated load when the crane is equipped with additional counterweight; and figures in framed and 25% greyed cells depends on the strength of the boom.

Load Charts Of Jib Hook For SCC800C FJ Operating Condition

kg(lb)× 1000

Boom length m (ft)	49m (160'9")											
Jib length m (ft)	9m (29'6")				13.5m (44'3")				18m (59'1")			
Jib angle Radius m(ft)	15°		30°		15°		30°		15°		30°	
58°	2.56 (5.64)	2.87 (6.33)	2.43 (5.36)	2.73 (6.02)	2.18 (4.81)	2.46 (5.42)	2.02 (4.45)	2.29 (5.05)	1.83 (4.03)	2.09 (4.61)	1.67 (3.68)	1.91 (4.21)
59°	2.74 (6.04)	3.06 (6.75)	2.60 (5.73)	2.90 (6.39)	2.34 (5.16)	2.63 (5.8)	2.17 (4.78)	2.44 (5.38)	1.98 (4.37)	2.24 (4.94)	1.79 (3.95)	2.04 (4.5)
60°	2.93 (6.46)	3.25 (7.16)	2.78 (6.13)	3.09 (6.81)	2.51 (5.53)	2.81 (6.19)	2.32 (5.11)	2.60 (5.73)	2.13 (4.7)	2.40 (5.29)	1.93 (4.25)	2.18 (4.81)
61°	3.14 (6.92)	3.47 (7.65)	2.96 (6.53)	3.28 (7.23)	2.69 (5.93)	2.99 (6.59)	2.48 (5.47)	2.77 (6.11)	2.29 (5.05)	2.57 (5.67)	2.07 (4.56)	2.33 (5.14)
62°	3.36 (7.41)	3.70 (8.16)	3.17 (6.99)	3.50 (7.72)	2.80 (6.17)	3.11 (6.86)	2.65 (5.84)	2.94 (6.48)	2.47 (5.45)	2.76 (6.08)	2.22 (4.89)	2.40 (5.29)
63°	3.60 (7.94)	3.95 (8.71)	3.30 (7.28)	3.64 (8.02)	3.09 (6.81)	3.41 (7.52)	2.84 (6.26)	3.14 (6.92)	2.66 (5.86)	2.95 (6.5)	2.38 (5.25)	2.40 (5.29)
64°	3.85 (8.49)	4.21 (9.28)	3.61 (7.96)	3.96 (8.73)	3.32 (7.32)	3.65 (8.05)	3.03 (6.68)	3.34 (7.36)	2.86 (6.31)	3.16 (6.97)	2.40 (5.29)	2.40 (5.29)
65°	4.10 (9.1)	4.50 (9.94)	3.90 (8.51)	4.20 (9.3)	3.60 (7.85)	3.90 (8.6)	3.20 (7.14)	3.60 (7.85)	3.10 (6.77)	3.40 (7.45)	2.40 (5.29)	2.40 (5.29)
66°	4.40 (9.77)	4.80 (10.63)	4.10 (9.08)	4.50 (9.9)	3.70 (8.2)	4.10 (8.97)	3.50 (7.65)	3.60 (7.94)	3.30 (7.3)	3.50 (7.72)	2.40 (5.29)	2.40 (5.29)
67°	4.75 (10.47)	5.20 (11.35)	4.40 (9.72)	4.80 (10.56)	4.10 (9.06)	4.50 (9.85)	3.60 (7.94)	3.60 (7.94)	3.50 (7.72)	3.50 (7.72)	2.40 (5.29)	2.40 (5.29)
68°	5.11 (11.27)	5.50 (12.19)	4.70 (10.41)	5.00 (11.02)	4.40 (9.72)	4.80 (10.56)	3.60 (7.94)	3.60 (7.94)	3.50 (7.72)	3.50 (7.72)	2.40 (5.29)	2.40 (5.29)
69°	5.49 (12.1)	5.92 (13.05)	5.00 (11.02)	5.00 (11.02)	4.80 (10.47)	5.10 (11.33)	3.60 (7.94)	3.60 (7.94)	3.50 (7.72)	3.50 (7.72)	2.40 (5.29)	2.40 (5.29)
70°	5.91 (13.03)	6.00 (13.23)	5.00 (11.02)	5.00 (11.02)	5.11 (11.27)	5.51 (12.15)	3.60 (7.94)	3.60 (7.94)	3.50 (7.72)	3.50 (7.72)	2.40 (5.29)	2.40 (5.29)
71°	6.00 (13.23)	6.00 (13.23)	5.00 (11.02)	5.00 (11.02)	5.52 (12.17)	5.94 (13.1)	3.60 (7.94)	3.60 (7.94)	3.50 (7.72)	3.50 (7.72)	2.40 (5.29)	2.40 (5.29)
72°	6.00 (13.23)	6.00 (13.23)	5.00 (11.02)	5.00 (11.02)	5.96 (13.14)	6.00 (13.23)	3.60 (7.94)	3.60 (7.94)	3.50 (7.72)	3.50 (7.72)	2.40 (5.29)	2.40 (5.29)
73°	6.00 (13.23)	6.00 (13.23)	5.00 (11.02)	5.00 (11.02)	6.00 (13.23)	6.00 (13.23)	3.60 (7.94)	3.60 (7.94)	3.50 (7.72)	3.50 (7.72)	2.40 (5.29)	2.40 (5.29)
74°	6.00 (13.23)	6.00 (13.23)	5.00 (11.02)	5.00 (11.02)	6.00 (13.23)	6.00 (13.23)	3.60 (7.94)	3.60 (7.94)	3.50 (7.72)	3.50 (7.72)	2.40 (5.29)	2.40 (5.29)
75°	6.00 (13.23)	6.00 (13.23)	5.00 (11.02)	5.00 (11.02)	6.00 (13.23)	6.00 (13.23)	3.60 (7.94)	3.60 (7.94)	3.50 (7.72)	3.50 (7.72)	2.40 (5.29)	2.40 (5.29)
76°	6.00 (13.23)	6.00 (13.23)	5.00 (11.02)	5.00 (11.02)	6.00 (13.23)	6.00 (13.23)	3.60 (7.94)	3.60 (7.94)	3.50 (7.72)	3.50 (7.72)	2.40 (5.29)	2.40 (5.29)
77°	6.00 (13.23)	6.00 (13.23)	5.00 (11.02)	5.00 (11.02)	6.00 (13.23)	6.00 (13.23)	3.60 (7.94)	3.60 (7.94)	3.50 (7.72)	3.50 (7.72)	2.40 (5.29)	2.40 (5.29)
78°	6.00 (13.23)	6.00 (13.23)	5.00 (11.02)	5.00 (11.02)	6.00 (13.23)	6.00 (13.23)	3.60 (7.94)	3.60 (7.94)	3.50 (7.72)	3.50 (7.72)	2.40 (5.29)	2.40 (5.29)
Counterweight kg(lb)×1000	27 (59.5)	27+2.5 (59.5+5.5)	27 (59.5)	27+2.5 (59.5+5.5)	27 (59.5)	27+2.5 (59.5+5.5)	27 (59.5)	27+2.5 (59.5+5.5)	27 (59.5)	27+2.5 (59.5+5.5)	27 (59.5)	27+2.5 (59.5+5.5)

Note: italic figures in 40% greyed cells indicate rated load when the crane is equipped with additional counterweight; and figures in framed and 25% greyed cells depends on the strength of the boom.

Load Charts Of Jib Hook For SCC800C FJ Operating Condition

kg (lb) × 1000

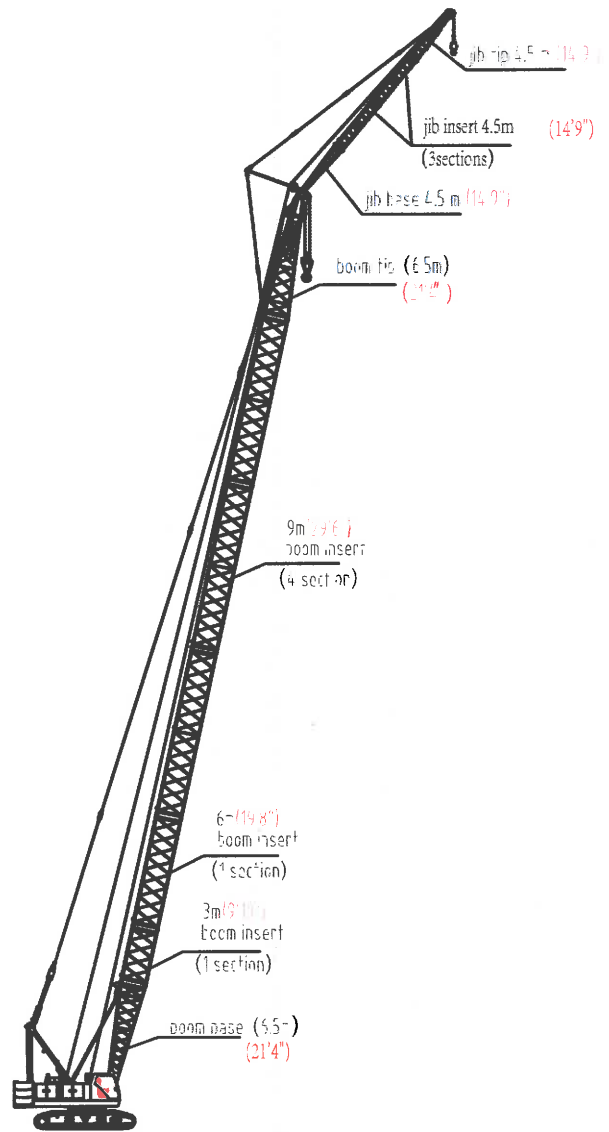
Boom length m (ft)	52m (170'7")											
	9m (29'6")				13.5m (44'3")							
Jib length m (ft)	15°		30°		15°		30°					
Jib angle Boom angle	15°		30°		15°		30°					
58°	2.05 (4.52)	2.35 (5.18)	1.94 (4.28)	2.22 (4.89)	1.74 (3.84)	2.01 (4.43)	1.62 (3.57)	1.88 (4.14)				
59°	2.19 (4.83)	2.49 (5.49)	2.08 (4.59)	2.37 (5.22)	1.90 (4.19)	2.18 (4.81)	1.76 (3.88)	2.02 (4.45)				
60°	2.34 (5.16)	2.65 (5.84)	2.22 (4.89)	2.52 (5.56)	2.06 (4.54)	2.34 (5.16)	1.91 (4.21)	2.18 (4.81)				
61°	2.51 (5.53)	2.83 (6.24)	2.37 (5.22)	2.68 (5.91)	2.24 (4.94)	2.53 (5.58)	2.06 (4.54)	2.33 (5.14)				
62°	2.69 (5.93)	3.02 (6.66)	2.54 (5.6)	2.85 (6.28)	2.42 (5.34)	2.72 (6)	2.23 (4.92)	2.51 (5.53)				
63°	2.88 (6.35)	3.22 (7.1)	2.64 (5.82)	2.96 (6.53)	2.63 (5.8)	2.94 (6.48)	2.41 (5.31)	2.70 (5.95)				
64°	3.08 (6.79)	3.43 (7.56)	2.89 (6.37)	3.22 (7.1)	2.84 (6.26)	3.16 (6.97)	2.60 (5.73)	2.90 (6.39)				
65°	3.30 (7.28)	3.70 (8.07)	3.10 (6.81)	3.40 (7.56)	3.10 (6.79)	3.40 (7.52)	2.90 (6.35)	3.20 (7.01)				
66°	3.50 (7.8)	3.90 (8.62)	3.30 (7.28)	3.70 (8.05)	3.30 (7.34)	3.70 (8.09)	3.00 (6.66)	3.30 (7.34)				
67°	3.80 (8.38)	4.20 (9.22)	3.50 (7.78)	3.90 (8.58)	3.60 (7.94)	4.00 (8.71)	3.30 (7.19)	3.60 (7.89)				
68°	4.09 (9.02)	4.50 (9.9)	3.80 (8.33)	4.00 (8.82)	3.90 (8.6)	4.30 (9.39)	3.50 (7.74)	3.60 (7.94)				
69°	4.39 (9.68)	4.80 (10.58)	4.00 (8.82)	4.00 (8.82)	4.20 (9.3)	4.60 (10.12)	3.60 (7.94)	3.60 (7.94)				
70°	4.73 (10.43)	4.80 (10.58)	4.00 (8.82)	4.00 (8.82)	4.50 (9.92)	4.80 (10.58)	3.60 (7.94)	3.60 (7.94)				
71°	4.80 (10.58)	4.80 (10.58)	4.00 (8.82)	4.00 (8.82)	4.66 (10.27)	4.80 (10.58)	3.60 (7.94)	3.60 (7.94)				
72°	4.80 (10.58)	4.80 (10.58)	4.00 (8.82)	4.00 (8.82)	4.80 (10.58)	4.80 (10.58)	3.60 (7.94)	3.60 (7.94)				
73°	4.80 (10.58)	4.80 (10.58)	4.00 (8.82)	4.00 (8.82)	4.80 (10.58)	4.80 (10.58)	3.60 (7.94)	3.60 (7.94)				
74°	4.80 (10.58)	4.80 (10.58)	4.00 (8.82)	4.00 (8.82)	4.80 (10.58)	4.80 (10.58)	3.60 (7.94)	3.60 (7.94)				
75°	4.80 (10.58)	4.80 (10.58)	4.00 (8.82)	4.00 (8.82)	4.80 (10.58)	4.80 (10.58)	3.60 (7.94)	3.60 (7.94)				
76°	4.80 (10.58)	4.80 (10.58)	4.00 (8.82)	4.00 (8.82)	4.80 (10.58)	4.80 (10.58)	3.60 (7.94)	3.60 (7.94)				
77°	4.80 (10.58)	4.80 (10.58)	4.00 (8.82)	4.00 (8.82)	4.80 (10.58)	4.80 (10.58)	3.60 (7.94)	3.60 (7.94)				
78°	4.80 (10.58)	4.80 (10.58)	4.00 (8.82)	4.00 (8.82)	4.80 (10.58)	4.80 (10.58)	3.60 (7.94)	3.60 (7.94)				
Counterweight kg (lb) × 1000	27 (59.5)	27+2.5 (59.5+5.5)	27 (59.5)	27+2.5 (59.5+5.5)	27 (59.5)	27+2.5 (59.5+5.5)	27 (59.5)	27+2.5 (59.5+5.5)				

Note: italic figures in 40% greyed cells indicate rated load when the crane is equipped with additional counterweight; and figures in framed and 25% greyed cells depends on the strength of the boom.

4.3 Load Charts of Boom Hook for FJ Operating Condition

Combination of Fixed Jib

Jib Length (m)/(ft)	Boom insert
	4.5m (14'9")
9 (29'6")	-
13.5 (44'3")	1
18 (59'1")	2



Operating condition

Load Charts of Boom Hook For SCC800C FJ Operating Condition

radius (m) /(ft)	boom length (m)										unit, kg (lb)×1000			
	43 (141'11")					46 (150'11")								
	0 (0'0")	9 (29'6")	13.5 (44'3")	18 (59'1")	18 (59'1")	0 (0'0")	9 (29'6")	13.5 (44'3")	18 (59'1")	18 (59'1")	0 (0'0")	9 (29'6")	13.5 (44'3")	18 (59'1")
8.5 (27'11")														
9 (29'6")														
10 (32'10")	24.14 (53.1)	23.14 (50.9)	22.84 (50.2)	22.49 (49.6)	25.32 (55.7)	24.32 (53.5)	24.02 (52.9)	23.67 (52.2)	20.58 (45.4)	20.38 (45.2)	19.98 (44)	19.68 (43.4)	19.33 (42.5)	22.05 (48.5)
11 (36'1")	21.17 (46.7)	20.17 (44.5)	19.87 (43.8)	19.52 (42.9)	22.23 (48.9)	21.23 (46.7)	20.93 (46)	20.58 (45.4)	18.08 (39.9)	18.58 (41)	17.58 (38.8)	17.28 (38.1)	16.93 (37.2)	19.55 (42.9)
12 (39'4")	18.76 (41.4)	17.76 (39.2)	17.46 (38.5)	17.11 (37.6)	19.73 (43.4)	18.73 (41.3)	18.43 (40.5)	18.08 (39.9)	16.02 (35.2)	16.67 (36.3)	15.59 (34.3)	15.29 (33.7)	14.94 (32.8)	17.48 (38.5)
13 (42'8")	16.77 (37)	15.77 (34.8)	15.47 (34.1)	15.12 (33.2)	17.67 (38)	16.67 (36.3)	16.37 (36.1)	16.02 (35.2)	14.28 (31.5)	14.92 (32.8)	13.92 (30.6)	13.62 (29.9)	13.27 (29.3)	15.75 (34.6)
14 (45'11")	15.11 (33.2)	14.11 (31)	13.81 (30.4)	13.46 (29.7)	15.93 (35)	14.93 (32.8)	14.63 (32.1)	14.28 (31.5)	12.81 (28.2)	13.50 (29.7)	12.50 (27.5)	12.20 (26.8)	11.85 (26.2)	14.75 (32.4)
15 (49'3")	13.69 (30.2)	12.69 (27.9)	12.39 (27.3)	12.04 (26.4)	14.46 (31.9)	13.46 (29.7)	13.16 (29.1)	12.81 (28.2)	11.53 (25.3)	12.28 (27.1)	11.28 (24.9)	10.98 (24.2)	10.63 (23.3)	13.00 (28.6)
16 (52'6")	12.47 (27.5)	11.47 (25.3)	11.17 (24.6)	10.82 (23.8)	13.18 (29.1)	12.18 (26.8)	11.88 (26.2)	11.53 (25.3)	9.45 (20.9)	10.28 (22.7)	9.28 (20.5)	8.98 (19.8)	8.63 (18.9)	10.92 (24)
18 (59'1")	10.47 (23.1)	9.47 (20.9)	9.17 (20.2)	8.82 (19.4)	11.10 (24.4)	10.10 (22.2)	9.80 (21.6)	9.45 (20.9)	7.82 (17.1)	8.72 (19.1)	7.72 (16.9)	7.42 (16.3)	7.07 (15.6)	9.29 (20.5)
20 (65'7")	8.90 (19.6)	7.90 (17.4)	7.60 (16.7)	7.25 (16)	9.47 (20.9)	8.47 (18.7)	8.17 (18)	7.82 (17.1)	6.51 (14.3)	7.41 (16.3)	6.41 (14.1)	6.11 (13.4)	5.76 (12.7)	7.97 (17.6)
22 (72'2")	7.61 (16.7)	6.61 (14.5)	6.31 (13.8)	5.96 (13.2)	8.16 (18)	7.16 (15.8)	6.86 (15.2)	6.51 (14.3)	5.43 (11.9)	6.34 (13.8)	5.34 (11.6)	5.04 (11)	4.69 (10.3)	6.89 (15.2)
24 (78'9")	6.54 (14.3)	5.54 (12.1)	5.24 (11.4)	4.89 (10.8)	7.08 (15.6)	6.08 (13.4)	5.78 (12.7)	5.43 (11.9)	4.87 (10.8)	5.78 (12.7)	4.78 (10.6)	4.48 (9.9)	4.14 (9)	5.96 (13.2)
26 (85'4")	5.64 (12.3)	4.64 (10.1)	4.34 (9.4)	3.99 (8.8)	6.17 (13.6)	5.17 (11.4)	4.87 (10.8)	4.52 (9.9)	4.07 (9)	4.98 (10.9)	3.98 (8.8)	3.68 (8.1)	3.33 (7.4)	5.16 (11.4)
28 (91'10")	4.88 (10.8)	3.88 (8.5)	3.58 (7.9)	3.23 (7)	5.37 (11.9)	4.37 (9.7)	4.07 (9)	3.72 (8.1)	3.38 (7.4)	4.29 (9.5)	3.29 (7.3)	3.03 (6.6)	2.73 (5.9)	4.48 (9.9)
30 (98'5")	4.23 (9.2)	3.23 (7)	2.93 (6.3)	2.58 (5.7)	4.68 (10.3)	3.68 (8.1)	3.38 (7.4)	3.03 (6.6)	2.78 (6.1)	3.69 (8.1)	2.69 (5.9)	2.46 (5.4)	2.16 (4.8)	3.88 (8.5)
32 (104'12")	3.66 (8.1)	2.66 (5.9)	2.36 (5.2)	2.01 (4.4)	4.08 (9)	3.08 (6.8)	2.78 (6.1)	2.43 (5.2)	2.26 (5)	3.08 (6.8)	2.08 (4.6)	1.81 (4)	1.51 (3.3)	2.90 (6.3)
34 (111'7")	3.17 (7)	2.17 (4.8)	1.87 (4.1)	1.52 (3.3)	3.56 (7.9)	2.56 (5.7)	2.26 (5)	1.91 (4.2)	1.79 (3.9)	2.56 (5.7)	1.56 (3.4)	1.32 (2.9)	1.08 (2.4)	2.36 (5.2)
36 (118'1")	2.73 (5.9)	1.73 (3.7)	1.43 (3)	1.08 (2.4)	3.10 (6.8)	2.10 (4.6)	1.80 (3.9)	1.45 (3)	1.39 (3)	2.10 (4.6)	1.10 (2.4)	0.88 (1.9)	0.63 (1.4)	2.00 (4.4)
38 (124'8")	2.34 (5)	1.34 (2.8)	1.04 (2.2)	0.84 (1.8)	2.69 (5.9)	1.69 (3.7)	1.39 (3)	1.04 (2.2)	0.93 (2)	1.69 (3.7)	0.84 (1.8)	0.63 (1.4)	0.41 (0.9)	1.49 (3.3)
Counter-weight					27 (59.5)	27 (59.5)	27 (59.5)	27 (59.5)	27 (59.5)	27 (59.5)	27 (59.5)	27 (59.5)	27 (59.5)	27+2.5 (59.5+5.5)

Note: Italic figures in 40% greyed cells indicate rated load when the crane is equipped with additional counterweight; and figures in framed and 25% greyed cells depends on the strength of the boom.

Load Charts of Boom Hook For SCC800C FJ Operating Condition

radius (m) /(ft)		boom length (m)										unit: kg (lb)×1000				
		49 (160'9")										52.00 (170'7")				
		0	9	13.5	18	0	9	13.5	18	0	9	13.5	0	9	13.5	
		(0'0")	(29'6")	(44'3")	(59'1")	(0'0")	(29'6")	(44'3")	(59'1")	(0'0")	(29'6")	(44'3")	(0'0")	(29'6")	(44'3")	
8.5 (27'11")																
9 (29'6")																
10 (32'10")																
11 (36'1")																
12 (39'4")		18.40 (40.5)	17.40 (38.3)	17.10 (37.6)	16.75 (36.8)	19.37 (42.7)	18.37 (40.5)	18.07 (39.9)	17.72 (38.9)	18.11 (39.9)	17.11 (37.6)	16.81 (37)	19.08 (42.1)	18.08 (39.9)	17.78 (39.2)	
13 (42'8")		16.41 (36.1)	15.41 (33.9)	15.11 (33.2)	14.76 (32.6)	17.30 (38.1)	16.30 (35.9)	16.00 (35.2)	15.65 (34.6)	16.13 (35.4)	15.13 (33.2)	14.83 (32.6)	17.02 (37.4)	16.02 (35.2)	15.72 (34.8)	
14 (45'11")		14.75 (32.4)	13.75 (30.2)	13.45 (29.5)	13.10 (28.8)	15.57 (34.3)	14.57 (32.1)	14.27 (31.5)	13.92 (30.8)	14.46 (31.9)	13.46 (29.7)	13.16 (29.1)	15.28 (33.7)	14.28 (31.5)	13.98 (30.8)	
15 (49'3")		13.33 (29.3)	12.33 (27.1)	12.03 (26.4)	11.68 (25.7)	14.09 (31)	13.09 (28.8)	12.79 (28.2)	12.44 (27.3)	13.04 (28.6)	12.04 (26.4)	11.74 (25.7)	13.81 (30.4)	12.81 (28.2)	12.51 (27.5)	
16 (52'6")		12.11 (26.6)	11.11 (24.4)	10.81 (23.8)	10.46 (23.1)	12.82 (28.2)	11.82 (26)	11.52 (25.3)	11.17 (24.8)	11.82 (26)	10.82 (23.8)	10.52 (23.1)	12.53 (27.5)	11.53 (25.3)	11.23 (24.6)	
18 (59'1")		10.11 (22.2)	9.11 (20)	8.81 (19.4)	8.46 (18.7)	10.74 (23.5)	9.74 (21.3)	9.44 (20.7)	9.09 (20)	9.82 (21.6)	8.82 (19.4)	8.52 (18.7)	10.45 (23.1)	9.45 (20.3)	9.15 (20.3)	
20 (65'7")		8.52 (18.7)	7.52 (16.5)	7.22 (15.8)	6.87 (15.2)	9.11 (20)	8.11 (17.8)	7.81 (17.1)	7.46 (16.5)	8.21 (18)	7.21 (15.8)	6.91 (15.2)	8.82 (19.4)	7.82 (17.1)	7.52 (16.3)	
22 (72'2")		7.22 (15.8)	6.22 (13.6)	5.92 (13)	5.57 (12.3)	7.79 (17.1)	6.79 (14.9)	6.49 (14.3)	6.14 (13.4)	6.90 (15.2)	5.90 (13)	5.60 (12.3)	7.51 (16.5)	6.51 (14.3)	6.21 (13.6)	
24 (78'9")		6.14 (13.4)	5.14 (11.2)	4.84 (10.5)	4.49 (9.9)	6.71 (14.7)	5.71 (12.5)	5.41 (11.8)	5.06 (11.3)	5.83 (12.7)	4.83 (10.5)	4.53 (9.9)	6.43 (14.1)	5.43 (11.9)	5.13 (11.2)	
26 (85'4")		5.25 (11.4)	4.25 (9.2)	3.95 (8.5)	3.60 (7.9)	5.77 (12.7)	4.77 (10.6)	4.47 (9.9)	4.12 (9)	4.93 (10.8)	3.93 (8.5)	3.63 (7.9)	5.50 (12.1)	4.50 (9.9)	4.20 (9.2)	
28 (91'10")		4.49 (9.9)	3.49 (7.7)	3.19 (7)	2.84 (6.1)	4.97 (11)	3.97 (8.8)	3.67 (8.1)	3.32 (7.2)	4.17 (9.2)	3.17 (7)	2.87 (6.3)	4.70 (10.3)	3.70 (8.1)	3.40 (7.4)	
30 (98'5")		3.83 (8.3)	2.83 (6.1)	2.53 (5.5)	2.18 (4.8)	4.28 (9.4)	3.28 (7.2)	2.98 (6.6)	2.63 (5.7)	3.52 (7.7)	2.52 (5.5)	2.22 (4.8)	4.01 (8.8)	3.01 (6.6)	2.71 (5.9)	
32 (104'12")		3.27 (7.2)	2.27 (5)	1.97 (4.4)	1.62 (3.5)	3.69 (8.1)	2.69 (5.9)	2.39 (5.2)	2.04 (4.4)	2.95 (6.6)	1.95 (4.4)	1.65 (3.7)	3.41 (7.4)	2.41 (5.2)	2.11 (4.6)	
34 (111'7")		2.77 (6.1)	1.77 (3.9)	1.47 (3.3)	1.12 (2.4)	3.16 (7)	2.16 (4.8)	1.86 (4.1)	1.51 (3.3)	2.46 (5.5)	1.46 (3.3)	1.16 (2.6)	2.88 (6.3)	1.88 (4.1)	1.58 (3.5)	
36 (118'1")		2.33 (5)	1.33 (2.8)	1.03 (2.2)	0.68 (1.5)	2.70 (5.9)	1.70 (3.7)	1.40 (3.1)	1.05 (2.4)	2.02 (4.4)	1.02 (2.2)	0.72 (1.6)	2.42 (5.2)	1.42 (3)	1.12 (2.4)	
38 (124'8")		1.94 (4.1)	0.94 (1.9)			2.29 (5)	1.29 (2.8)	0.99 (2.2)		1.63 (3.5)			2.01 (4.4)	1.01 (2.2)		
Counter-weight						27 (59.5)	27+2.5 (59.5+5.5)	27+2.5 (59.5+5.5)			27 (59.5)			27+2.5 (59.5+5.5)		

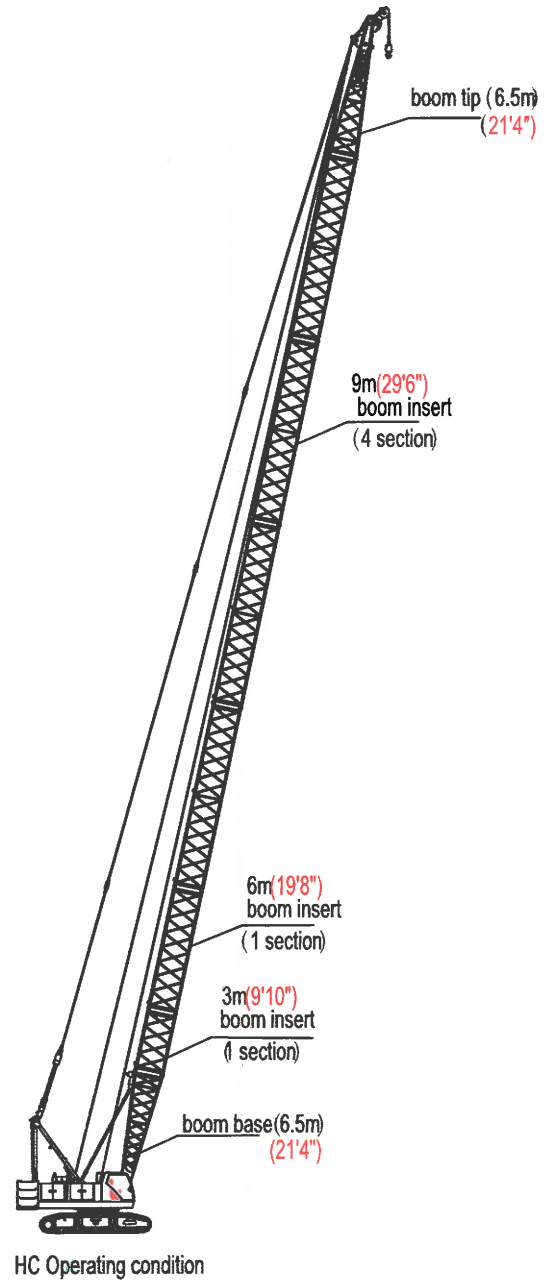
Note: italic figures in 40% grayed cells indicate rated load when the crane is equipped with additional counterweight; and figures in framed and 25% grayed cells depends on the strength of the boom.

Section 4-Load Charts

4.4 Load Charts of Extension Jib for HC Operating Condition

Boom Combination of HC Operating Condition

Boom length (m) / (ft)	Boom insert		
	3 m (9'10")	6 m (19'8")	9m (29'6")
13(42'8")	-	-	-
16(52'6")	1	-	-
19(62'4")	-	1	-
22(72'2")	-	-	1
25(82'0")	1	-	1
28(91'10")	-	1	1
31(108'8")	1	1	1
	-	-	2
34(111'7")	1	-	2
37(121'5")	-	1	2
40(131'3")	1	1	2
	-	-	3
43(141'1")	1	-	3
46(150'11")	-	1	3
49(160'9")	1	1	3
	-	-	4
52(170'7")	1	-	4
55(180'5")	-	1	4
58(190'3")	1	1	4



Load Charts Of Extension Jib For SCC800C HC Operating Condition kg(lb)×1000

Boom Length m (ft)

Radius m(ft)	13 (42'8")	16 (52'6")	19 (62'4")	22 (72'2")	25 (82')	28 (91'10")	31 (101'8")	34 (111'7")
4.3 (14'1")	9.0 (19.8)							
4.5 (14'9")	9.0 (19.8)							
5 (16'5")	9.0 (19.8)	9.0 (19.8)						
5.5 (18'1")	9.0 (19.8)	9.0 (19.8)	9.0 (19.8)					
6 (19'8")	9.0 (19.8)	9.0 (19.8)	9.0 (19.8)	9.0 (19.8)				
6.5 (21'4")	9.0 (19.8)	9.0 (19.8)	9.0 (19.8)	9.0 (19.8)	9.0 (19.8)			
7 (22'12")	9.0 (19.8)	9.0 (19.8)	9.0 (19.8)	9.0 (19.8)	9.0 (19.8)	9.0 (19.8)		
7.5 (24'7")	9.0 (19.8)	9.0 (19.8)	9.0 (19.8)	9.0 (19.8)	9.0 (19.8)	9.0 (19.8)	9.0 (19.8)	
8 (26'3")	9.0 (19.8)	9.0 (19.8)	9.0 (19.8)	9.0 (19.8)	9.0 (19.8)	9.0 (19.8)	9.0 (19.8)	9.0 (19.8)
8.5 (27'11")	9.0 (19.8)	9.0 (19.8)	9.0 (19.8)	9.0 (19.8)	9.0 (19.8)	9.0 (19.8)	9.0 (19.8)	9.0 (19.8)
9 (29'6")	9.0 (19.8)	9.0 (19.8)	9.0 (19.8)	9.0 (19.8)	9.0 (19.8)	9.0 (19.8)	9.0 (19.8)	9.0 (19.8)
10 (32'10")	9.0 (19.8)	9.0 (19.8)	9.0 (19.8)	9.0 (19.8)	9.0 (19.8)	9.0 (19.8)	9.0 (19.8)	9.0 (19.8)
11 (36'1")	9.0 (19.8)	9.0 (19.8)	9.0 (19.8)	9.0 (19.8)	9.0 (19.8)	9.0 (19.8)	9.0 (19.8)	9.0 (19.8)
12 (39'4")	9.0 (19.8)	9.0 (19.8)	9.0 (19.8)	9.0 (19.8)	9.0 (19.8)	9.0 (19.8)	9.0 (19.8)	9.0 (19.8)
13 (42'8")		9.0 (19.8)	9.0 (19.8)	9.0 (19.8)	9.0 (19.8)	9.0 (19.8)	9.0 (19.8)	9.0 (19.8)
14 (45'11")		9.0 (19.8)	9.0 (19.8)	9.0 (19.8)	9.0 (19.8)	9.0 (19.8)	9.0 (19.8)	9.0 (19.8)
15 (49'3")			9.0 (19.8)	9.0 (19.8)	9.0 (19.8)	9.0 (19.8)	9.0 (19.8)	9.0 (19.8)
16 (52'6")			9.0 (19.8)	9.0 (19.8)	9.0 (19.8)	9.0 (19.8)	9.0 (19.8)	9.0 (19.8)
18 (59'1")				9.0 (19.8)	9.0 (19.8)	9.0 (19.8)	9.0 (19.8)	9.0 (19.8)
20 (65'7")					9.0 (19.8)	9.0 (19.8)	9.0 (19.8)	9.0 (19.8)
22 (72'2")					8.8 (19.4)	8.6 (19)	8.4 (18.5)	8.1 (17.9)
24 (78'9")						7.5 (16.5)	7.2 (15.9)	7.1 (15.7)
26 (85'4")							6.5 (14.3)	6.2 (13.7)
28 (91'10")								5.4 (11.9)
30 (98'5")								4.7 (10.4)
32 (104'12")								
34 (111'7")								

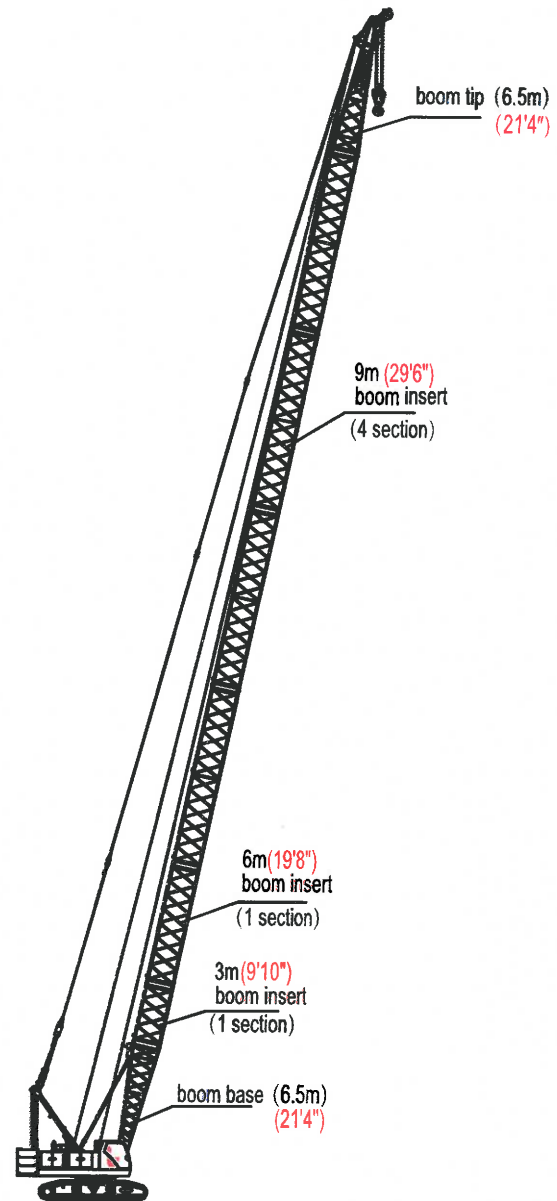
Load Charts Of Extension Jib For SCC800C HC Operating Condition kg(lb)×1000

Boom Length m(ft)								
Radius m(ft)	37 (121'5")	40 (131'3")	43 (141'1")	46 (150'11")	49 (160'9")	52 (170'7")	55 (180'5")	58 (190'3")
8.5 (27'11")								
9 (29'6")	9.0 (19.8)							
10 (32'10")	9.0 (19.8)	9.0 (19.8)	9.0 (19.8)					
11 (36'1")	9.0 (19.8)	9.0 (19.8)	9.0 (19.8)	9.0 (19.8)				
12 (39'4")	9.0 (19.8)	9.0 (19.8)	9.0 (19.8)	9.0 (19.8)	9.0 (19.8)	9.0 (19.8)		
13 (42'8")	9.0 (19.8)	9.0 (19.8)	9.0 (19.8)	9.0 (19.8)	9.0 (19.8)	9.0 (19.8)	9.0 (19.8)	9.0 (19.8)
14 (45'11")	9.0 (19.8)	9.0 (19.8)	9.0 (19.8)	9.0 (19.8)	9.0 (19.8)	9.0 (19.8)	9.0 (19.8)	9.0 (19.8)
15 (49'3")	9.0 (19.8)	9.0 (19.8)	9.0 (19.8)	9.0 (19.8)	9.0 (19.8)	9.0 (19.8)	9.0 (19.8)	9.0 (19.8)
16 (52'6")	9.0 (19.8)	9.0 (19.8)	9.0 (19.8)	9.0 (19.8)	9.0 (19.8)	9.0 (19.8)	9.0 (19.8)	9.0 (19.8)
18 (59'1")	9.0 (19.8)	9.0 (19.8)	9.0 (19.8)	9.0 (19.8)	9.0 (19.8)	9.0 (19.8)	9.0 (19.8)	9.0 (19.8)
20 (65'7")	9.0 (19.8)	9.0 (19.8)	8.7 (19.2)	8.5 (18.7)	8.3 (18.3)	8.0 (17.6)	7.8 (17.2)	7.5 (16.5)
22 (72'2")	7.9 (17.4)	7.7 (17)	7.4 (16.3)	7.2 (15.9)	7.0 (15.4)	6.7 (14.8)	6.5 (14.3)	6.2 (13.7)
24 (78'9")	6.9 (15.2)	6.7 (14.8)	6.3 (13.9)	6.1 (13.4)	5.9 (13)	5.6 (12.3)	5.4 (11.9)	5.1 (11.2)
26 (85'4")	6.0 (13.2)	5.8 (12.8)	5.4 (11.9)	5.2 (11.5)	5.1 (11.2)	4.7 (10.4)	4.5 (9.9)	4.2 (9.3)
28 (91'10")	5.2 (11.5)	5.0 (11)	4.7 (10.4)	4.5 (9.9)	4.3 (9.5)	4.0 (8.8)	3.8 (8.4)	3.5 (7.7)
30 (98'5")	4.5 (9.9)	4.4 (9.7)	4.0 (8.8)	3.8 (8.4)	3.6 (7.9)	3.3 (7.3)	3.1 (6.8)	2.8 (6.2)
32 (104'12")	4.0 (8.8)	3.8 (8.4)	3.5 (7.7)	3.3 (7.3)	3.1 (6.8)	2.8 (6.2)	2.6 (5.7)	2.2 (4.9)
34 (111'7")		3.3 (7.3)	2.9 (6.4)	2.8 (6.2)	2.6 (5.7)	2.3 (5.1)	2.1 (4.6)	1.7 (3.7)
36 (118'1")			2.5 (5.5)	2.3 (5.1)	2.1 (4.6)	1.8 (4)	1.6 (3.5)	1.3 (2.9)
38 (124'8")			2.1 (4.6)	1.9 (4.2)	1.7 (3.7)	1.4 (3.1)	1.2 (2.6)	0.9 (2)

4.5 Load Charts of Boom Hook for HC Operating Condition

Boom Combination of HC Operating Condition

Boom length (m) / (ft)	Boom insert		
	3 m (9'10")	6 m (19'8")	9m (29'6")
13(42'8")	-	-	-
16(52'6")	1	-	-
19(62'4")	-	1	-
22(72'2")	-	-	1
25(82'0")	1	-	1
28(91'10")	-	1	1
31(108'8")	1	1	1
34(111'7")	1	-	2
37(121'5")	-	1	2
40(131'3")	1	1	2
43(141'1")	-	-	3
46(150'11")	1	-	3
49(160'9")	-	1	3
52(170'7")	1	-	3
55(180'5")	-	1	3
58(190'3")	1	1	3



HC Operating condition

Load Charts of Boom Hook For SCC800C HC Operating Condition

kg (lb) × 1000

With Boom extension										
Boom m (ft)	13	16	19	22	25	28	31		34	
Radius m (ft)	(42'8")	(52'6")	(62'4")	(72'2")	(82)	(91'10")	(101'8")		(111'7")	
4.3 <i>(14'1")</i>	79.80 <i>(175.9)</i>									
4.5 <i>(14'9")</i>	76.30 <i>(168.2)</i>									
5 <i>(16'5")</i>	67.87 <i>(149.6)</i>	66.60 <i>(146.8)</i>								
5.5 <i>(18'1")</i>	58.98 <i>(130)</i>	58.70 <i>(129.4)</i>	58.52 <i>(128.9)</i>							
6 <i>(19'8")</i>	52.10 <i>(114.8)</i>	51.82 <i>(114.1)</i>	51.64 <i>(113.7)</i>	51.46 <i>(113.5)</i>						
6.5 <i>(21'4")</i>	46.62 <i>(102.7)</i>	46.34 <i>(102)</i>	46.15 <i>(101.8)</i>	45.98 <i>(101.4)</i>	45.70 <i>(100.7)</i>					
7 <i>(22'12")</i>	42.14 <i>(92.8)</i>	41.86 <i>(92.3)</i>	41.68 <i>(91.9)</i>	41.50 <i>(91.4)</i>	41.22 <i>(90.8)</i>	40.52 <i>(89.2)</i>				
7.5 <i>(24'7")</i>	38.43 <i>(84.6)</i>	38.10 <i>(83.9)</i>	38.00 <i>(83.7)</i>	37.80 <i>(83.3)</i>	37.50 <i>(82.6)</i>	36.90 <i>(81.3)</i>	36.69 <i>(80.9)</i>	38.30 <i>(84.4)</i>		
8 <i>(26'3")</i>	35.29 <i>(77.8)</i>	35.00 <i>(77.1)</i>	34.82 <i>(76.7)</i>	34.64 <i>(76.2)</i>	34.36 <i>(75.8)</i>	33.77 <i>(74.5)</i>	33.59 <i>(74)</i>	35.09 <i>(77.3)</i>	33.31 <i>(73.4)</i>	34.81 <i>(76.7)</i>
8.5 <i>(27'11")</i>	32.60 <i>(71.8)</i>	32.31 <i>(71.2)</i>	32.13 <i>(70.7)</i>	31.96 <i>(70.5)</i>	31.67 <i>(69.8)</i>	31.12 <i>(68.5)</i>	30.94 <i>(68.1)</i>	32.35 <i>(71.4)</i>	30.66 <i>(67.6)</i>	32.06 <i>(70.7)</i>
9 <i>(29'6")</i>	30.27 <i>(66.7)</i>	29.99 <i>(66.1)</i>	29.81 <i>(65.6)</i>	29.63 <i>(65.2)</i>	29.35 <i>(64.8)</i>	28.82 <i>(63.4)</i>	28.65 <i>(63.2)</i>	29.97 <i>(66.1)</i>	28.36 <i>(62.6)</i>	29.68 <i>(65.4)</i>
10 <i>(32'10")</i>	26.45 <i>(58.4)</i>	26.17 <i>(57.7)</i>	25.98 <i>(57.3)</i>	25.81 <i>(56.8)</i>	25.52 <i>(56.2)</i>	25.05 <i>(55.3)</i>	24.87 <i>(54.8)</i>	26.06 <i>(57.5)</i>	24.59 <i>(54.2)</i>	25.77 <i>(56.8)</i>
11 <i>(36'1")</i>	23.44 <i>(51.5)</i>	23.15 <i>(51.1)</i>	22.97 <i>(50.7)</i>	22.79 <i>(50.2)</i>	22.51 <i>(49.6)</i>	22.08 <i>(48.7)</i>	21.90 <i>(48.2)</i>	22.97 <i>(50.7)</i>	21.61 <i>(47.6)</i>	22.68 <i>(50)</i>
12 <i>(39'4")</i>	21.01 <i>(46.2)</i>	20.72 <i>(45.6)</i>	20.54 <i>(45.1)</i>	20.36 <i>(44.9)</i>	20.07 <i>(44.3)</i>	19.67 <i>(43.4)</i>	19.49 <i>(42.9)</i>	20.47 <i>(45.1)</i>	19.21 <i>(42.3)</i>	20.18 <i>(44.5)</i>
13 <i>(42'8")</i>		18.71 <i>(41.2)</i>	18.53 <i>(40.7)</i>	18.35 <i>(40.5)</i>	18.07 <i>(39.9)</i>	17.68 <i>(39)</i>	17.51 <i>(38.5)</i>	18.40 <i>(40.5)</i>	17.22 <i>(37.9)</i>	18.12 <i>(39.9)</i>
14 <i>(45'11")</i>		17.03 <i>(37.4)</i>	16.84 <i>(37)</i>	16.67 <i>(36.8)</i>	16.38 <i>(36.1)</i>	16.02 <i>(35.2)</i>	15.84 <i>(34.8)</i>	16.67 <i>(36.8)</i>	15.56 <i>(34.3)</i>	16.38 <i>(36.1)</i>
15 <i>(49'3")</i>			15.41 <i>(33.9)</i>	15.23 <i>(33.5)</i>	14.95 <i>(33)</i>	14.60 <i>(32.1)</i>	14.42 <i>(31.7)</i>	15.19 <i>(33.5)</i>	14.14 <i>(31)</i>	14.91 <i>(32.8)</i>
16 <i>(52'6")</i>			14.17 <i>(31.3)</i>	14.00 <i>(30.8)</i>	13.71 <i>(30.2)</i>	13.38 <i>(29.5)</i>	13.20 <i>(29.1)</i>	13.92 <i>(30.6)</i>	12.91 <i>(28.4)</i>	13.63 <i>(29.9)</i>
18 <i>(59'1")</i>				11.98 <i>(26.4)</i>	11.69 <i>(25.7)</i>	11.38 <i>(25.1)</i>	11.20 <i>(24.6)</i>	11.84 <i>(26)</i>	10.92 <i>(24)</i>	11.55 <i>(25.5)</i>
20 <i>(65'7")</i>					10.11 <i>(22.2)</i>	9.81 <i>(21.6)</i>	9.64 <i>(21.1)</i>	10.21 <i>(22.4)</i>	9.35 <i>(20.7)</i>	9.92 <i>(21.8)</i>
22 <i>(72'2")</i>					8.83 <i>(19.4)</i>	8.55 <i>(18.9)</i>	8.38 <i>(18.5)</i>	8.89 <i>(19.6)</i>	8.09 <i>(17.8)</i>	8.67 <i>(18.9)</i>
24 <i>(78'9")</i>						7.52 <i>(16.5)</i>	7.34 <i>(16)</i>	7.81 <i>(17.1)</i>	7.05 <i>(15.6)</i>	7.53 <i>(16.5)</i>
26 <i>(85'4")</i>							6.47 <i>(14.3)</i>	6.91 <i>(15.2)</i>	6.16 <i>(13.6)</i>	6.62 <i>(14.5)</i>
28 <i>(91'10")</i>									5.40 <i>(11.9)</i>	5.86 <i>(13)</i>
30 <i>(98'5")</i>									4.74 <i>(10.3)</i>	5.19 <i>(11.4)</i>
Counterweight kg (lb) × 1000	27 <i>(59.5)</i>	27 <i>(59.5)</i>	27 <i>(59.5)</i>	27 <i>(59.5)</i>	27 <i>(59.5)</i>	27 <i>(59.5)</i>	27 <i>(59.5)</i>	27 <i>(59.5+5.5)</i>	27 <i>(59.5)</i>	27+2.5 <i>(59.5+5.5)</i>

Note: italic figures in 40% greyed cells indicate rated load when the crane is equipped with additional counterweight; and figures in framed and 25% greyed cells depends on the strength of the boom.

Load Charts of Boom Hook For SCC800C HC Operating Condition

kg (lb) × 1000

With Boom extension										
Boom m (ft)	37 (121'5")		40 (131'3")		43 (141'1")		46 (150'11")		49 (140'9")	
Radius m (ft)										
9 (29'6")	28.18 (62.13)	<i>29.50</i> (65.04)								
10 (32'10")	24.40 (53.79)	<i>25.58</i> (56.39)	24.23 (53.42)	<i>25.41</i> (56.02)	23.94 (52.78)	<i>25.12</i> (55.38)				
11 (36'1")	21.43 (47.24)	<i>22.50</i> (49.6)	21.25 (46.85)	<i>22.32</i> (49.21)	20.97 (46.23)	<i>22.03</i> (48.57)	20.78 (45.81)	<i>21.85</i> (48.17)		
12 (39'4")	19.02 (41.93)	<i>20.00</i> (44.09)	18.85 (41.56)	<i>19.82</i> (43.69)	18.56 (40.92)	<i>19.53</i> (43.06)	18.38 (40.52)	<i>19.35</i> (42.66)	18.20 (40.12)	<i>19.17</i> (42.26)
13 (42'8")	17.04 (37.57)	<i>17.93</i> (39.53)	16.86 (37.17)	<i>17.75</i> (39.13)	16.57 (36.53)	<i>17.47</i> (38.51)	16.39 (36.13)	<i>17.28</i> (38.1)	16.21 (35.74)	<i>17.10</i> (37.7)
14 (45'11")	15.37 (33.88)	<i>16.20</i> (35.71)	15.19 (33.49)	<i>16.02</i> (35.32)	14.91 (32.87)	<i>15.73</i> (34.68)	14.72 (32.45)	<i>15.55</i> (34.28)	14.55 (32.08)	<i>15.37</i> (33.88)
15 (49'3")	13.95 (30.75)	<i>14.72</i> (32.45)	13.78 (30.38)	<i>14.54</i> (32.05)	13.49 (29.74)	<i>14.26</i> (31.44)	13.30 (29.32)	<i>14.07</i> (31.02)	13.13 (28.95)	<i>13.89</i> (30.62)
16 (52'6")	12.70 (28.06)	<i>13.50</i> (29.65)	12.60 (27.67)	<i>13.30</i> (29.25)	12.30 (27.05)	<i>13.00</i> (28.62)	12.10 (26.63)	<i>12.80</i> (28.22)	11.90 (26.26)	<i>12.60</i> (27.82)
18 (59'1")	10.70 (23.66)	<i>11.40</i> (25.07)	10.60 (23.26)	<i>11.20</i> (24.67)	10.30 (22.64)	<i>10.90</i> (24.03)	10.10 (22.22)	<i>10.70</i> (23.63)	9.90 (21.85)	<i>10.50</i> (23.24)
20 (65'7")	9.17 (20.22)	<i>9.70</i> (21.45)	9.00 (19.82)	<i>9.60</i> (21.08)	8.70 (19.18)	<i>9.30</i> (20.44)	8.50 (18.78)	<i>9.10</i> (20.04)	8.30 (18.34)	<i>8.90</i> (19.64)
22 (72'2")	7.91 (17.44)	<i>8.40</i> (18.55)	7.70 (17.04)	<i>8.20</i> (18.17)	7.40 (16.34)	<i>8.00</i> (17.55)	7.20 (15.9)	<i>7.80</i> (17.13)	7.00 (15.48)	<i>7.60</i> (16.73)
24 (78'9")	6.85 (15.1)	<i>7.34</i> (16.18)	6.70 (14.68)	<i>7.20</i> (15.81)	6.30 (13.98)	<i>6.90</i> (15.17)	6.10 (13.54)	<i>6.70</i> (14.75)	5.90 (13.1)	<i>6.50</i> (14.35)
26 (85'4")	5.95 (13.12)	<i>6.44</i> (14.2)	5.76 (12.7)	<i>6.26</i> (13.8)	5.44 (11.99)	<i>5.97</i> (13.16)	5.24 (11.55)	<i>5.76</i> (12.7)	5.05 (11.13)	<i>5.57</i> (12.28)
28 (91'10")	5.19 (11.44)	<i>5.67</i> (12.5)	5.00 (11.02)	<i>5.48</i> (12.08)	4.68 (10.32)	<i>5.17</i> (11.4)	4.48 (9.88)	<i>4.96</i> (10.93)	4.29 (9.46)	<i>4.77</i> (10.52)
30 (98'5")	4.54 (10.01)	<i>4.99</i> (11)	4.35 (9.59)	<i>4.80</i> (10.58)	4.03 (8.88)	<i>4.48</i> (9.88)	3.83 (8.44)	<i>4.28</i> (9.44)	3.63 (8)	<i>4.08</i> (8.99)
32 (104'12")	3.97 (8.75)	<i>4.39</i> (9.66)	3.78 (8.33)	<i>4.20</i> (9.26)	3.46 (7.63)	<i>3.88</i> (8.55)	3.26 (7.19)	<i>3.68</i> (8.11)	3.07 (6.77)	<i>3.49</i> (7.69)
34 (111'7")			3.28 (7.23)	<i>3.68</i> (8.11)	2.97 (6.55)	<i>3.36</i> (7.41)	2.77 (6.11)	<i>3.16</i> (6.97)	2.57 (5.67)	<i>2.96</i> (6.53)
36 (118'1")					2.53 (5.58)	<i>2.90</i> (6.39)	2.33 (5.14)	<i>2.70</i> (5.95)	2.13 (4.7)	<i>2.50</i> (5.51)
38 (124'8")					2.14 (4.72)	<i>2.49</i> (5.49)	1.94 (4.28)	<i>2.29</i> (5.05)	1.74 (3.84)	<i>2.09</i> (4.61)
Counterweight kg (lb) × 1000	27 (59.5)	27+2.5 (59.5+5.5)	27 (59.5)	27+2.5 (59.5+5.5)	27 (59.5)	27+2.5 (59.5+5.5)	27 (59.5)	27+2.5 (59.5+5.5)	27 (59.5)	27+2.5 (59.5+5.5)

Note: italic figures in 40% greyed cells indicate rated load when the crane is equipped with additional counterweight; and figures in framed and 25% greyed cells depends on the strength of the boom.

Load Charts of Boom Hook For SCC800C HC Operating Condition

kg(lb)×1000

With Boom extension										
Boom m (ft) Radius m (ft)	52 (170'7")		55 (180'5")		58 (190'3")					
12 (39'4")	17.91 (39.48)	18.88 (41.82)								
13 (42'8")	15.93 (35.12)	16.82 (37.08)	15.74 (34.7)	16.63 (36.86)	15.46 (34.08)	16.35 (36.04)				
14 (45'11")	14.26 (31.44)	15.08 (33.25)	14.08 (31.04)	14.90 (32.88)	13.79 (30.4)	14.61 (32.27)				
15 (49'3")	12.84 (28.31)	13.61 (30)	12.66 (27.91)	13.42 (29.59)	12.37 (27.27)	13.14 (28.97)				
16 (52'6")	11.62 (25.62)	12.33 (27.18)	11.43 (25.2)	12.15 (26.79)	11.15 (24.58)	11.86 (26.15)				
18 (59'1")	9.62 (21.21)	10.25 (22.6)	9.43 (20.79)	10.07 (22.2)	9.12 (20.11)	9.78 (21.56)				
20 (65'7")	8.01 (17.66)	8.62 (19)	7.81 (17.22)	8.44 (18.61)	7.49 (16.51)	8.15 (17.97)				
22 (72'2")	6.70 (14.77)	7.30 (16.12)	6.50 (14.33)	7.10 (15.7)	6.20 (13.65)	6.80 (15.01)				
24 (78'9")	5.60 (12.41)	6.20 (13.73)	5.40 (11.97)	6.00 (13.21)	5.10 (11.27)	5.70 (12.52)				
26 (85'4")	4.73 (10.43)	5.30 (11.68)	4.50 (9.99)	5.10 (11.13)	4.20 (9.3)	4.70 (10.45)				
28 (91'10")	3.97 (8.75)	4.50 (9.92)	3.80 (8.31)	4.30 (9.37)	3.50 (7.63)	3.90 (8.69)				
30 (98'5")	3.32 (7.32)	3.81 (8.4)	3.10 (6.88)	3.60 (7.87)	2.80 (6.17)	3.30 (7.16)				
32 (104'12")	2.75 (6.06)	3.21 (7.08)	2.55 (5.62)	2.97 (6.55)	2.24 (4.94)	2.65 (5.84)				
34 (111'7")	2.26 (4.98)	2.68 (5.91)	2.05 (4.52)	2.45 (5.4)	1.74 (3.84)	2.13 (4.7)				
36 (118'1")	1.82 (4.01)	2.22 (4.89)	1.61 (3.55)	1.98 (4.37)	1.30 (2.87)	1.67 (3.68)				
38 (124'8")	1.43 (3.15)	1.81 (3.99)	1.22 (2.69)	1.57 (3.46)	0.91 (2.01)	1.26 (2.78)				
Counterweight kg(lb)×1000	27 (59.5)	27+2.5 (59.5+5.5)	27 (59.5)	27+2.5 (59.5+5.5)	27 (59.5)	27+2.5 (59.5+5.5)	27 (59.5)	27+2.5 (59.5+5.5)	27 (59.5)	27+2.5 (59.5+5.5)

Note: italic figures in 40% greyed cells indicate rated load when the crane is equipped with additional counterweight; and figures in framed and 25% greyed cells depends on the strength of the boom.